




# Advanced Vision

Engineering & General Contracting

## Contact Us

 Al-Ghadeer Dist. Basra, Iraq

 +964 780 000 3029

 [info@av-iq.co](mailto:info@av-iq.co)

 [www.av-iq.co](http://www.av-iq.co)

# CONTENTS

05	<b>Contact</b>
06	<b>Who We Are</b>
08	<b>What We Do</b>
08	<b>Expertise</b>
10	<b>Our Service</b>
22	<b>Construction</b> PROJECT
24	<b>Administrative</b> PROJECT
32	<b>Commercial</b> PROJECT
34	<b>Residential</b> PROJECT
36	<b>Steel Structure</b> PROJECT
38	<b>Covermount</b> PROJECT
40	<b>Formwork</b> PROJECT
42	<b>Supervision</b> PROJECT
44	<b>Mixed Use</b> PROJECT
46	<b>Educational</b> PROJECT
48	<b>Camp</b> PROJECT
50	<b>Urban Design</b> PROJECT
52	<b>Infrastructure</b> PROJECT
56	<b>Oil &amp; Gas</b> PROJECT
58	<b>Medical</b> PROJECT
62	<b>Sport</b> PROJECT

## Who We Are

Advanced Vision is a team of highly skilled professionals including engineers, architects, designers, planners, builders, makers, thinkers and visionaries who collaborate on innovative projects. With over 10 years of experience in design and construction for various industries such as oil and gas, buildings, infrastructure projects, and urban planning, we leverage the latest technologies and programs to achieve exceptional results



Our team is dedicated to pushing the boundaries of what is possible and delivering cutting-edge solutions that exceed our clients' expectations. We pride ourselves on our attention to detail, commitment to quality, and passion for creating sustainable and efficient designs. Let us bring your vision to life with our expertise and creativity





# What We Do

Advanced Vision is a full-service design and construction company that excels in handling intricate projects of all magnitudes. Our team of experts from diverse fields utilizes the latest in construction engineering and architecture to guarantee the most sustainable, creative and innovative designs, and timely delivery of large-scale projects within budget constraints.

## Expertise

### Engineering

- Structural Engineering
- Mechanical Engineering
- Electrical Engineering
- Civil Engineering
- BIM/Revit
- Architectural Engineering

### Geotechnical engineering

- Deep & Shallow Foundation Study
- Earth structure design
- Soil improvement

### Master Planning

- Structural & Regional Planning
- Urban Planning
- District Units Planning
- Urban Regeneration & Renewal
- Landscape Design

### Architecture

- Conceptual Design
- Design Development
- BIM/Revit
- Graphic Design
- Data-Driven Design

### Surveying

- Quantity Surveying & Building Assessment
- Topographic & Land Surveying

### Interior Design

- Space Planning
- Furniture Schedules
- Signage & Wayfinding
- Art Design

### Shop drawings

- Detailed dimensions and measurements
- Material specifications
- Installation details
- Fabrication details

### Post Contract

- Construction Management
- Construction Supervision
- Defects Liability Supervision
- Progress Reporting
- Cost Control & Planning
- Pre/Post Contract QS
- BOQs
- Value Engineering
- Contract Documentation



## Our Service

Advanced Vision is a full-service design and construction company that excels in handling intricate projects of all magnitudes. Our team of experts from diverse fields utilizes the latest in construction engineering and architecture to guarantee the most sustainable, creative and innovative designs, and timely delivery of large-scale projects within budget constraints.

### Architecture

- **Conceptual Design:** Our architects translate your vision into captivating concepts, laying the foundation for transformative projects.
- **Design Development:** With meticulous attention to detail, we refine initial concepts into comprehensive architectural plans that embody functionality and elegance.
- **BIM/Revit:** Harnessing the power of Building Information Modeling (BIM) and Revit technology, we ensure seamless collaboration and precise coordination throughout the design process.
- **Graphic Design:** Our graphic design experts elevate visual communication, breathing life into architectural concepts and facilitating stakeholder engagement.
- **Data-Driven Design:** Leveraging data analytics, we optimize designs for efficiency, sustainability, and performance, ensuring lasting impact.

### Interior Design:

- **Space Planning:** We optimize interior spaces for functionality, aesthetics, and user experience, maximizing the potential of every square foot.
- **Furniture Schedules:** Our interior designers curate bespoke furniture solutions that complement the overall design aesthetic and meet client needs.
- **Signage & Wayfinding:** Through intuitive signage and wayfinding systems, we enhance navigation and user experience within built environments.
- **Art Design:** We integrate art seamlessly into architectural and interior design, enriching spaces with creativity and cultural significance.





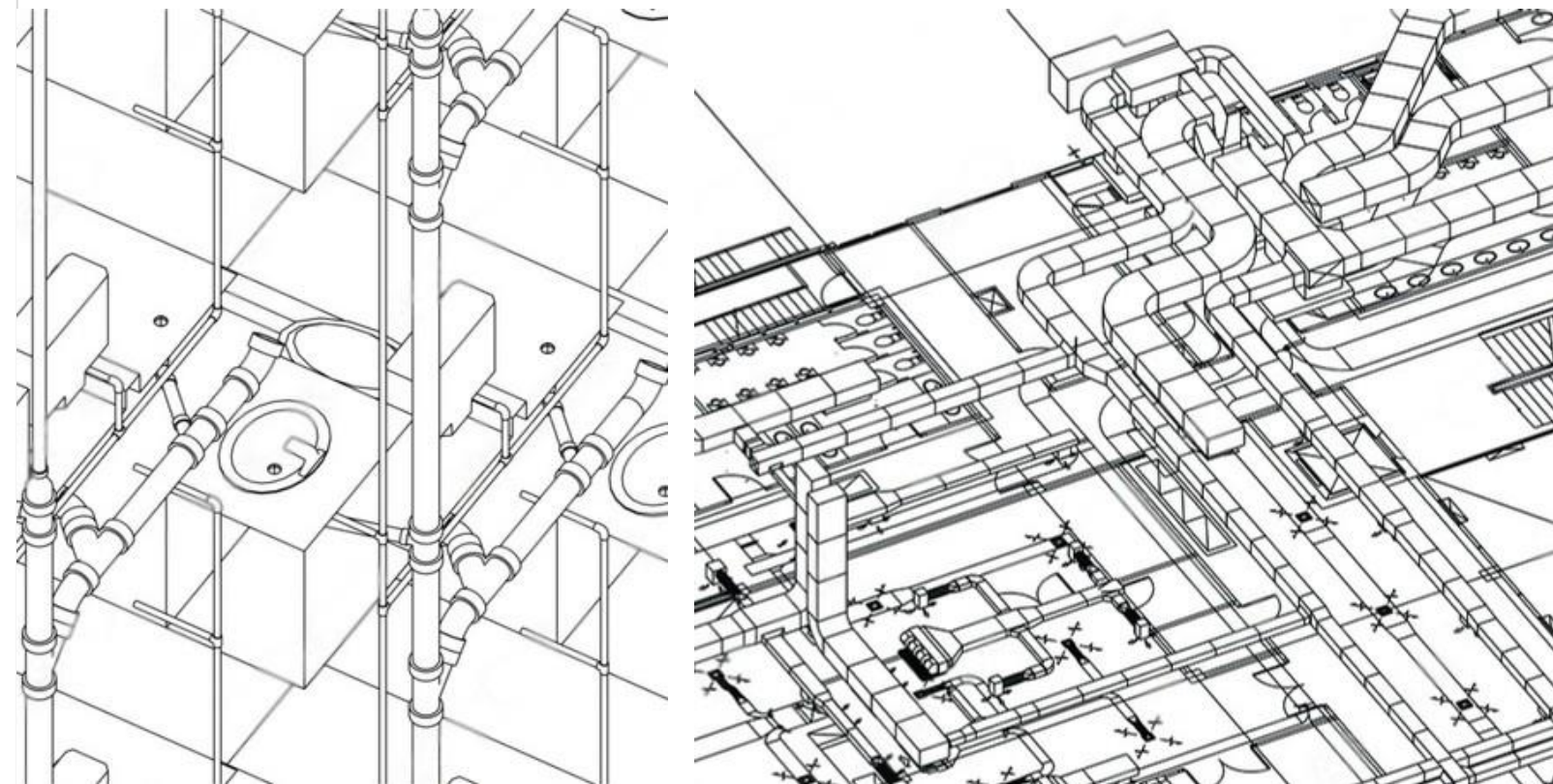
# Our Service

## Engineering:

- **Structural Engineering:** Our structural engineers provide robust analysis and design solutions to support the integrity and resilience of your projects.
- **Mechanical Engineering:** From HVAC systems to equipment installations, our mechanical engineers optimize functionality and performance while ensuring energy efficiency.
- **Electrical Engineering:** With a focus on safety and reliability, our electrical engineers deliver innovative solutions for power distribution and control systems.
- **Civil Engineering:** We tackle complex challenges in site development, infrastructure design, and environmental impact assessment with precision and expertise.
- **BIM/Revit:** Integrating BIM and Revit into engineering workflows, we streamline coordination and enhance the efficiency of design processes.
- **Architectural Engineering:** Our interdisciplinary approach combines architectural and engineering principles to deliver integrated solutions that balance aesthetics with functionality.

## Shop Drawings:

- **Detailed Dimensions and Measurements:** Our shop drawings provide precise dimensions and measurements, ensuring accuracy and alignment with project requirements.
- **Material Specifications:** We specify materials and finishes according to project specifications and industry standards, ensuring quality and performance.
- **Installation Details:** Our shop drawings include comprehensive installation details, guiding contractors and tradespeople in the proper assembly and installation of components.
- **Fabrication Details:** We provide detailed fabrication drawings for custom components and elements, facilitating efficient manufacturing and assembly processes.





# Our Service

## Geotechnical engineering :

- **Deep & Shallow Foundation Study:** We conduct comprehensive studies to assess soil conditions and determine optimal foundation solutions.
- **Earth Structure Design:** Our expertise in earth structure design ensures stability and resilience in challenging terrain.
- **Soil Improvement:** Using innovative techniques, we enhance soil properties to support construction and mitigate risks.



## Surveying:

- **Quantity Surveying & Building Assessment:** Our surveyors provide accurate cost estimation and building assessments, guiding informed decision-making.
- **Topographic & Land Surveying:** Through precise mapping and data collection, we support informed design and planning decisions.





# Our Service

## Master Planning:

- **Structural & Regional Planning:** Our master planners develop strategic frameworks to guide sustainable development at both local and regional scales.
- **Urban Planning:** We shape vibrant and resilient urban environments through thoughtful design and community engagement.
- **District Units Planning:** Our expertise in district-level planning ensures cohesive development and efficient land use.
- **Urban Regeneration & Renewal:** We breathe new life into urban spaces through innovative regeneration and renewal strategies.
- **Landscape Design:** Our landscape architects create immersive outdoor environments that enhance quality of life and connectivity.



## Post Contract:

- **Construction Management:** Our experienced team oversees all aspects of construction, ensuring adherence to schedule, budget, and quality standards.
- **Construction Supervision:** We provide on-site supervision and coordination to ensure smooth execution and timely completion of construction activities.
- **Defects Liability Supervision:** Our rigorous quality control processes identify and address any defects promptly, ensuring the integrity and longevity of the built environment.
- **Progress Reporting:** Transparent and regular progress reporting keeps clients informed and engaged throughout the construction process.
- **Cost Control & Planning:** We employ advanced cost control techniques and strategic planning to optimize project budgets and resources.
- **Pre/Post Contract QS:** Our quantity surveying services encompass both pre-contract cost estimation and post-contract cost management, ensuring financial accountability at every stage.
- **BOQs:** Detailed Bills of Materials (BOQs) provide clarity and accuracy in project costing and procurement.
- **Value Engineering:** We leverage value engineering principles to optimize project performance and maximize return on investment.
- **Contract Documentation:** Thorough and accurate contract documentation minimizes risk and ensures legal compliance throughout the project lifecycle.





# Our BIM Service

We provide BIM and CAD Staffing Services to companies that needs additional support for ongoing projects or need to implement BIM in your on-site/off-site offices at very Competitive price. Highly skilled and Experienced Professional

## BIM Modeling Services:

- BIM Architectural Services
- BIM Architectural Design Services
- BIM Architectural Detailing Services
- BIM Structural Services
- BIM Structural Design Services
- BIM Structural Detailing Services
- MEP BIM Services
- Mechanical BIM Services
- Electrical BIM Services
- Plumbing BIM Services
- Interior Design Services
- Facade Modeling Services
- COBie Modeling Services
- Rebar Modeling Services
- Landscape Modeling Services

## BIM Automation

- BIM Automation
- Revit Automation
- Navisworks Automation

## BIM Automation

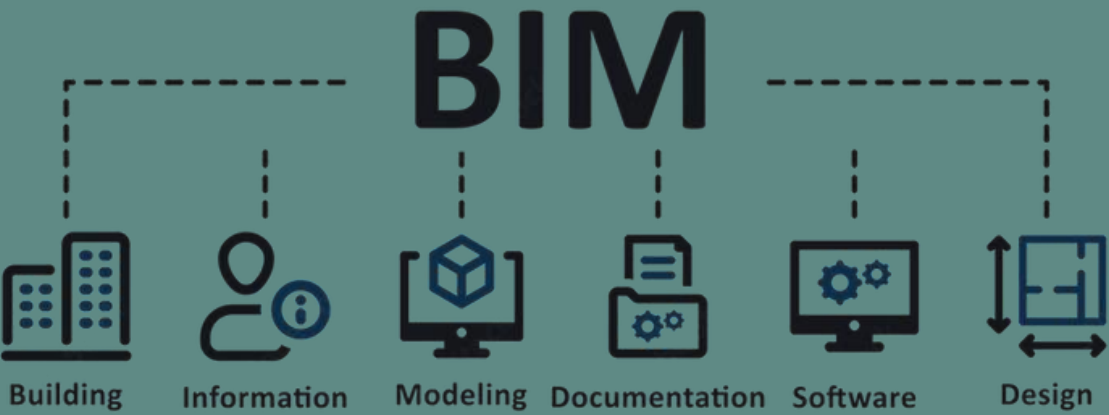
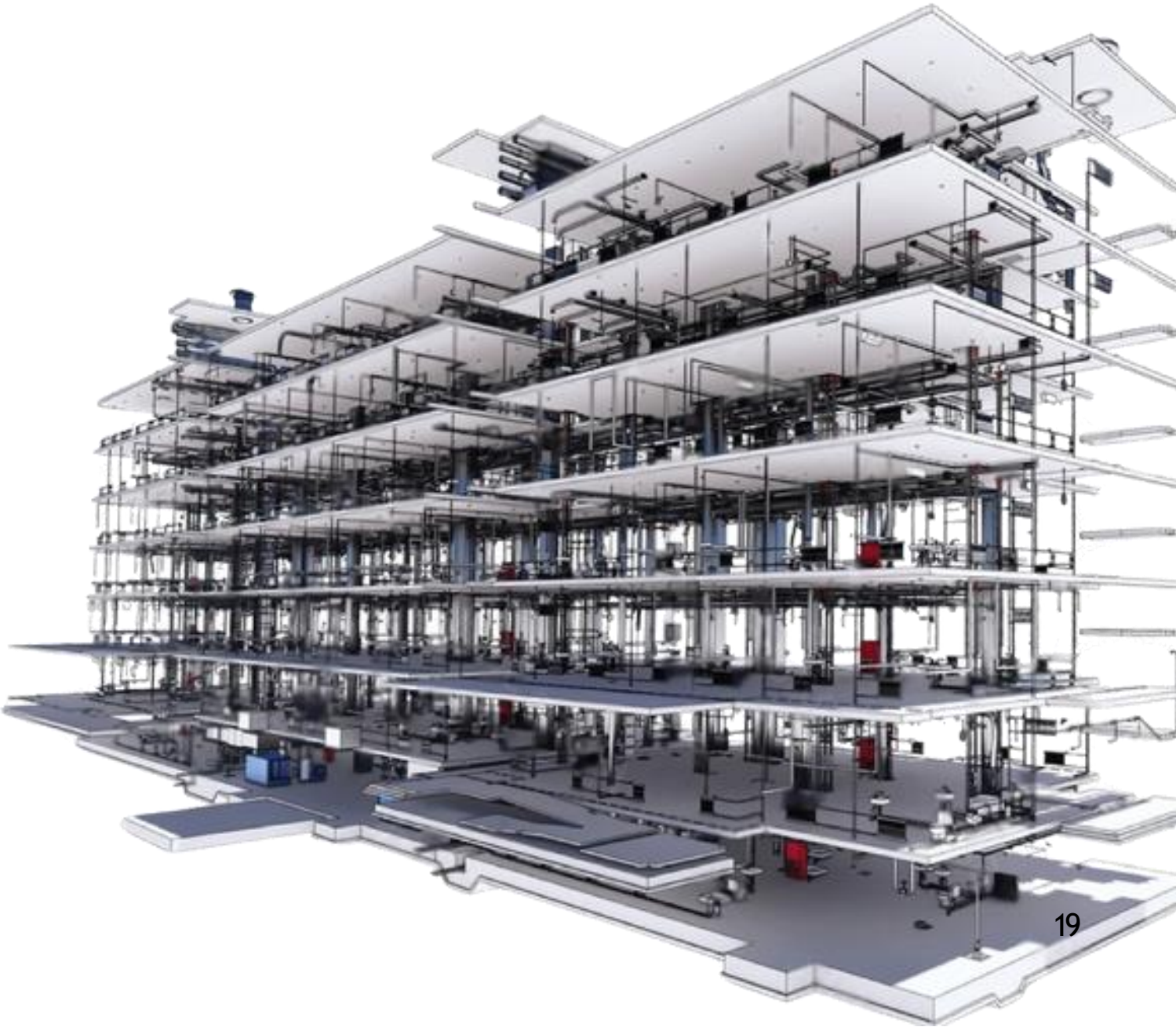
- BIM Consulting Services
- BIM Implementation Services
- BIM Documentation Services
- BIM Execution Plan
- BIM Integration

## Featured BIM Services

- 3D BIM Modeling Visualization
- 4D BIM Planning, Scheduling and Sequencing
- 5D BIM Cost Estimation & Quantity Take-Offs
- 6D BIM Sustainability & Energy Analysis
- 7D BIM Facilities Management and Maintenance
- BIM Clash Detection & Resolution
- BIM Rendering & Walkthrough Services
- BIM Revit Family Creation

## BIM Contract Staffing

- BIM Modelers (Architectural / Structural / MEPF / Civil 3D)
- BIM Coordinators
- BIM Architect
- BIM Managers
- HVAC BIM Modeler
- Interior BIM Modeler
- Landscape BIM Modeler
- Infrastructure BIM Modeler
- CAD Draftsman (Mechanical / Electrical)
- BIM Leads or BIM Specialists





# Our Service

## Oil And Gas :

At Advanced Vision, we extend our expertise beyond traditional realms to include specialized services in the oil and gas sector. With a proven track record of delivering innovative solutions, we are committed to meeting the unique challenges and demands of this industry

- Process Engineering
- Instrumentation Engineering
- Mechanical Engineering
- Piping Engineering
- Civil Engineering





# Selected Project Construction Project



## Construction Project

### Ur Church

- Location Dhi Qar, Iraq
- Size 10,000 sqm
- Client Golden Spectrum







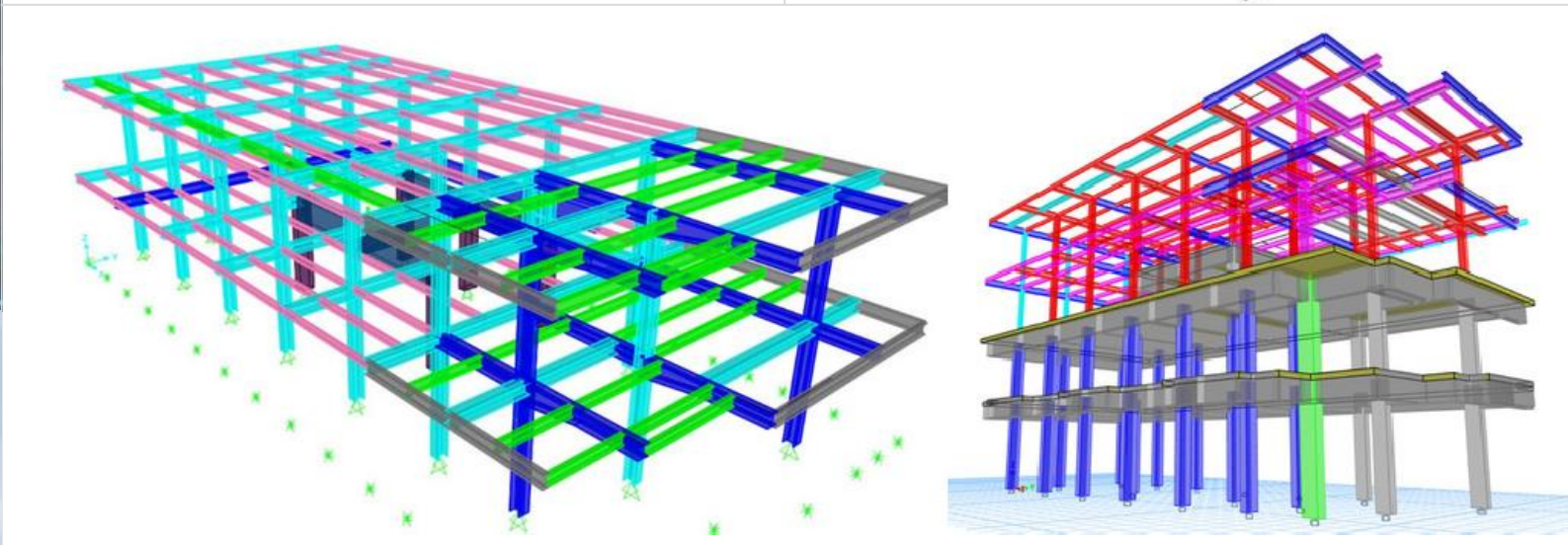
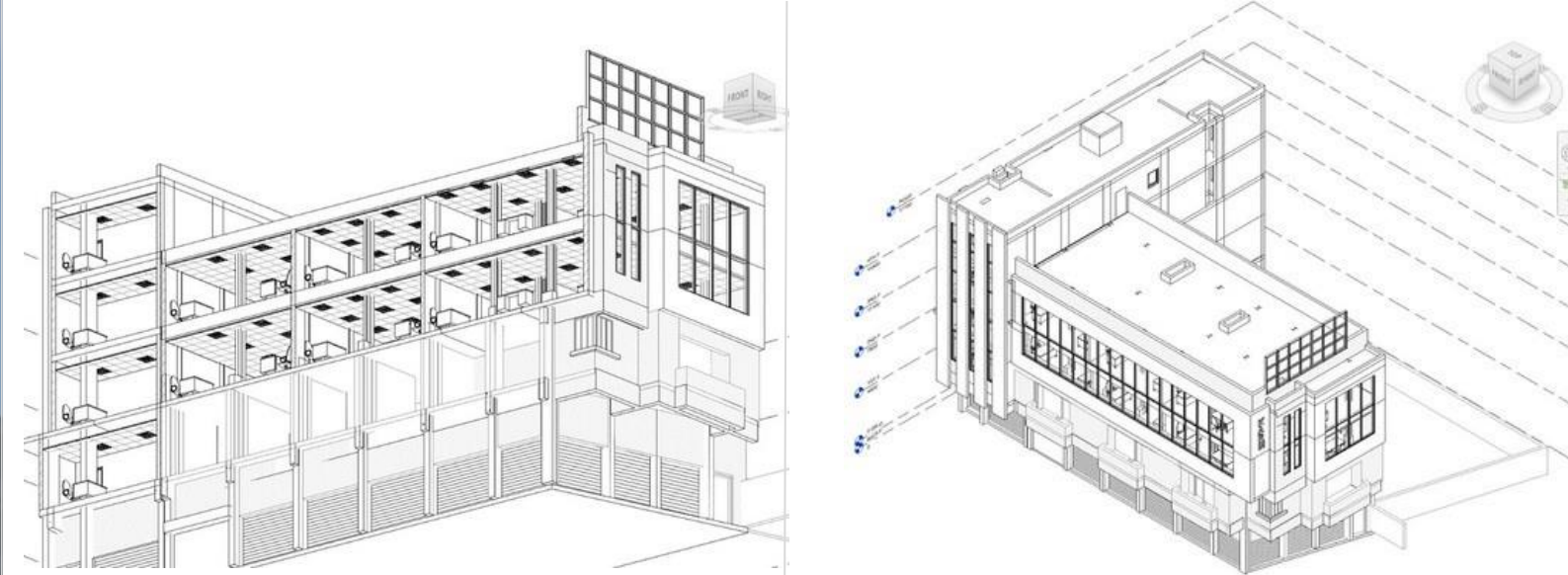
## Construction Project

### Ur Church

- ♦ Location Dhi Qar, Iraq
- ♦ Size 10,000 sqm
- ♦ Client Golden Spectrum



# Selected Project Construction Project



## Construction Project

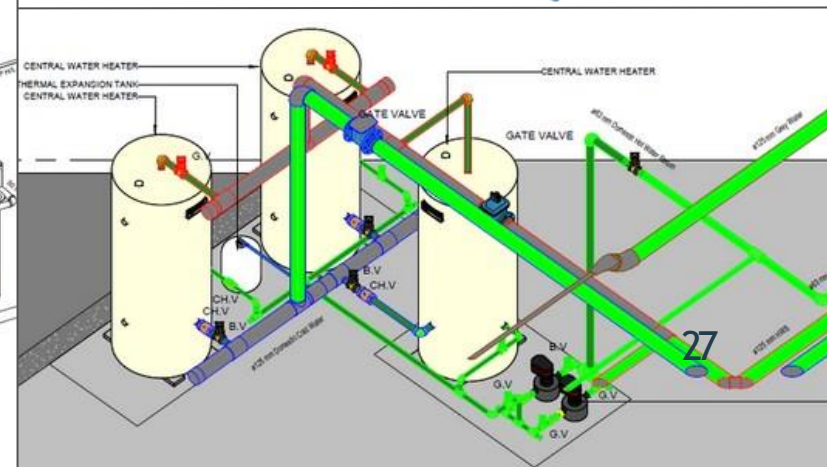
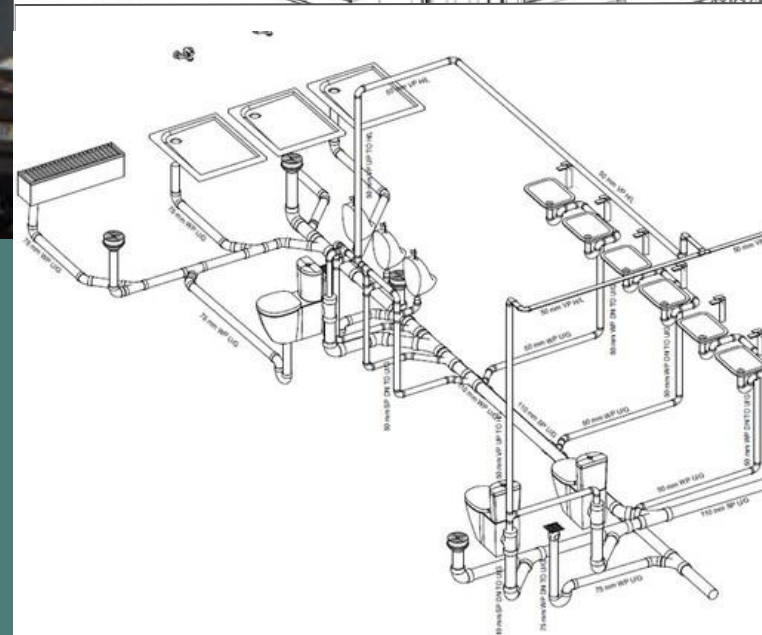
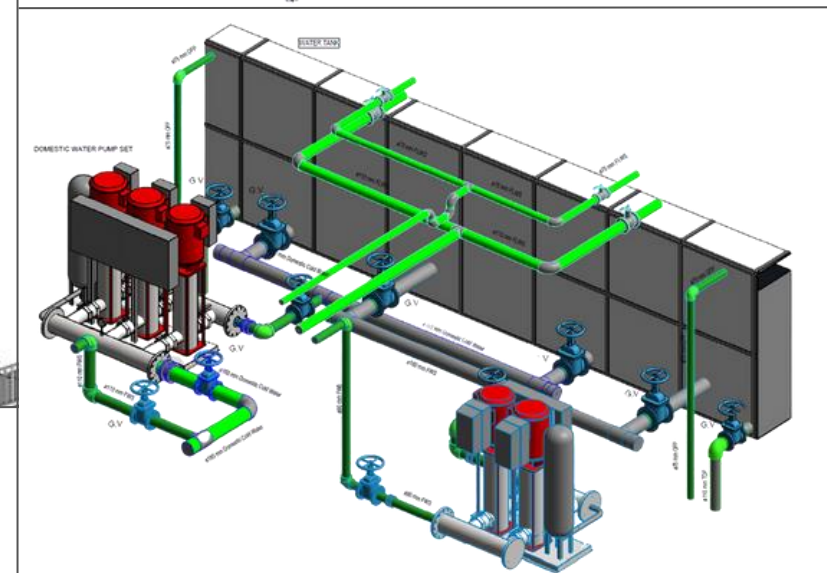
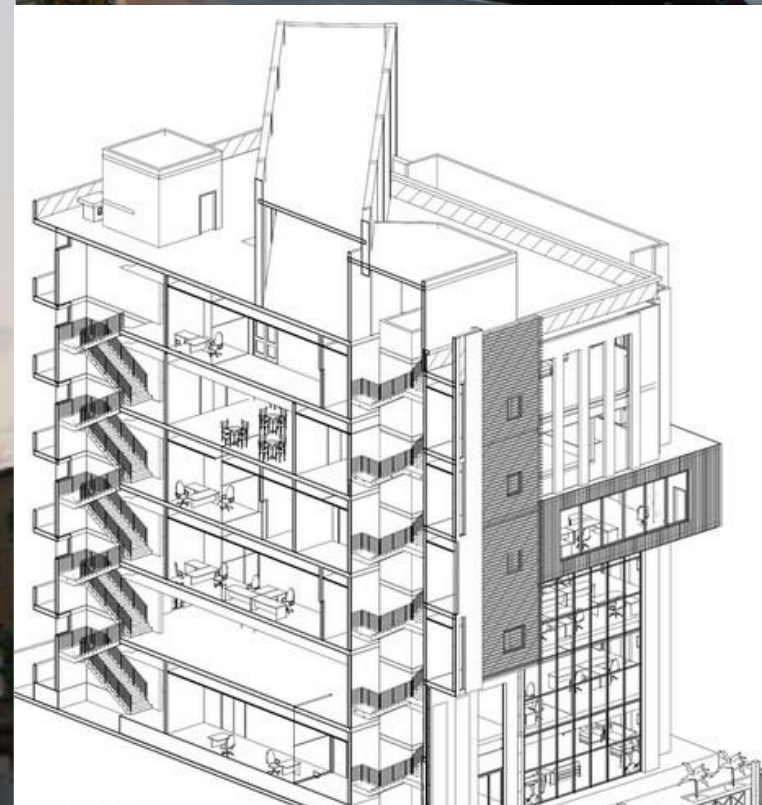
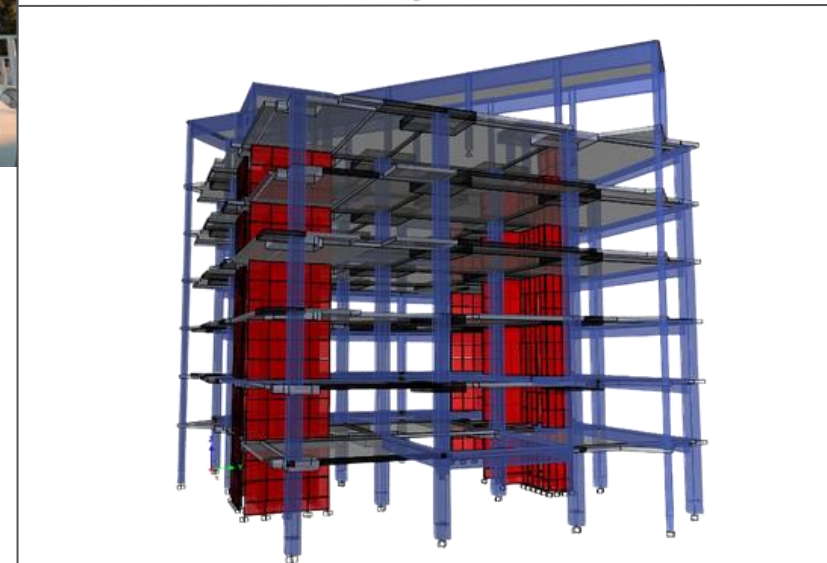
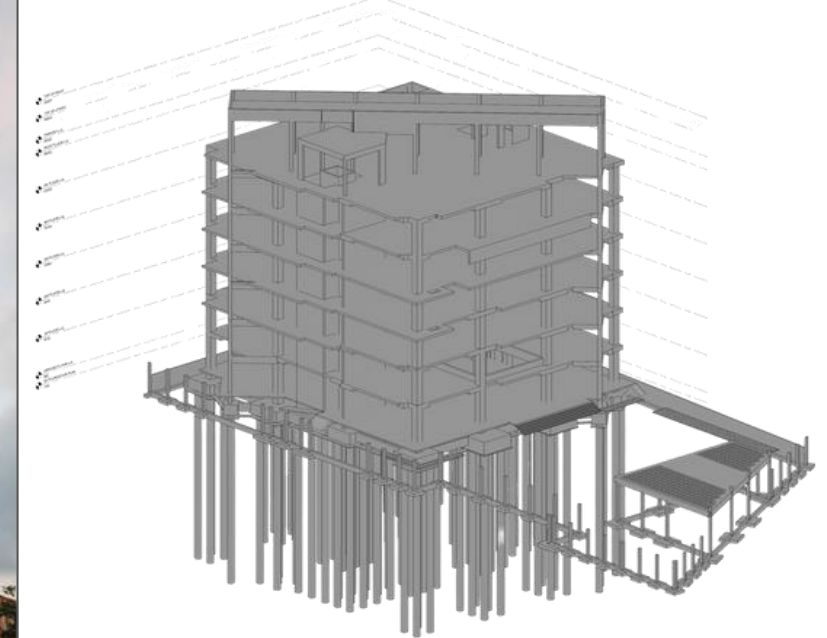
## KARM Building

- Location Al kradah, Baghdad, Iraq
- Size 400 sqm
- Client A.M.S



# Selected Project

## Administrative Project



## Administrative Project

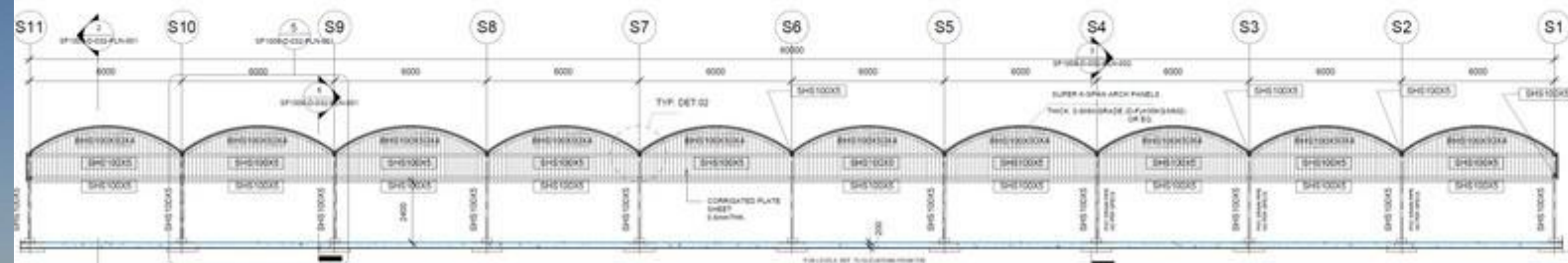
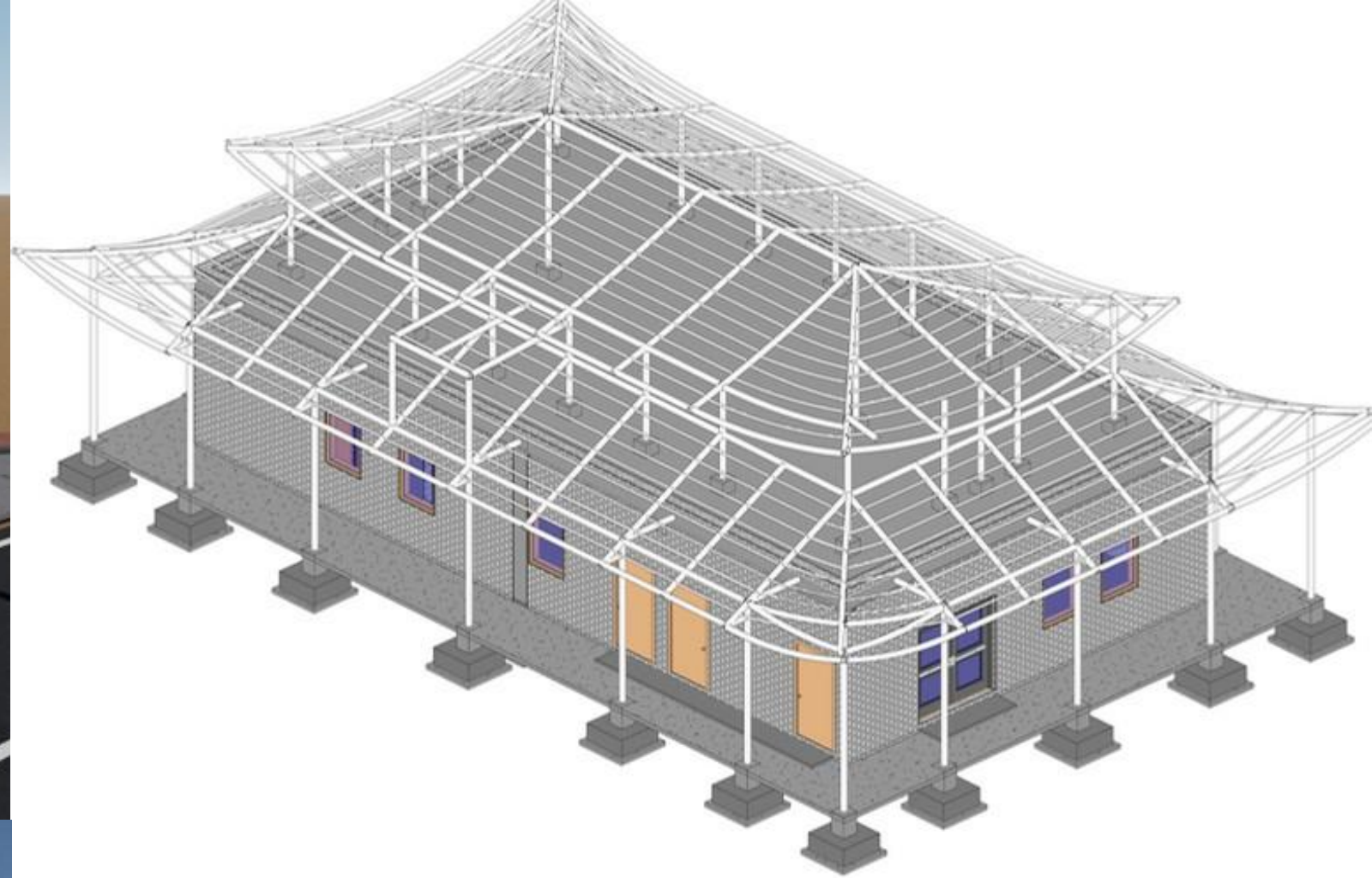
### BASRA INVESTMENT COMMISSION HEADQUARTERS

- Location Basra, Iraq
- Size 3,000 sqm
- Client Basra Investment Commission



## Selected Project

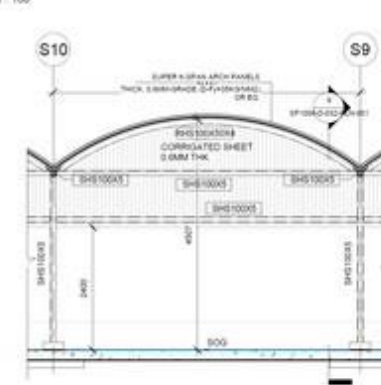
### Administrative Project



K-SPAN TYPE 4 - ENDWALL ELEVATION

1

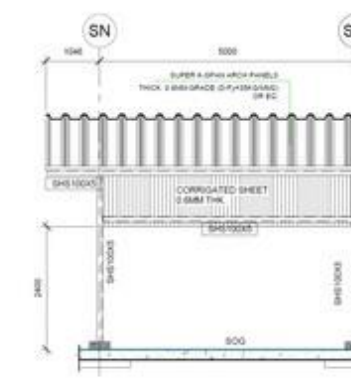
1:100



Section 5 - Calout 1

5

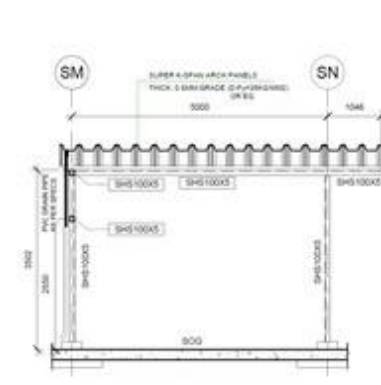
1:50



K-SPAN TYPE 4 - SIDE WALL ELEVATION-TYP SECTION 2-2

2

1:50



SECTION 6-6

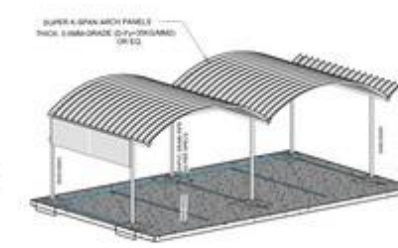
6

1:50



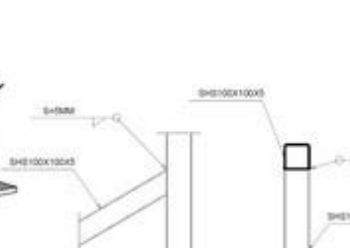
K-SPAN TYPE 4 - BACK SIDE 3D VIEW

3



K-SPAN TYPE 4 - FRONT SIDE 3D VIEW

4



TYP.DETAIL-SHS100X5 WELD

7

SCALE



TYP.DETAIL 02-FOR K-SPAN FIXATION

8

SCALE

## Administrative Project

### CPF Security Check Point

- Location: Siba, Basra, Iraq
- Size: 3500 sqm
- Client: ALDHAM IN ALMUTAHIDA CO, KEIL



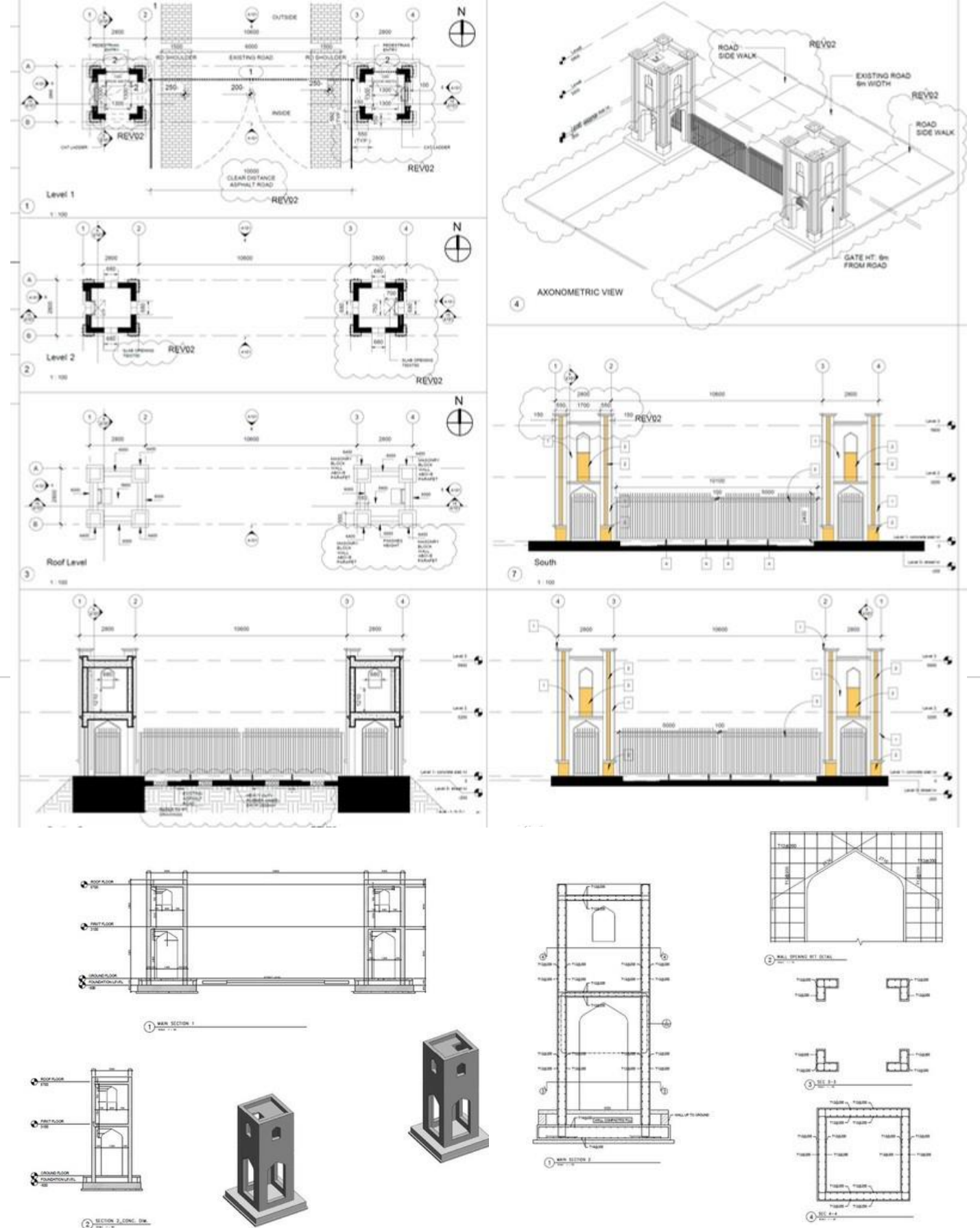
## Selected Project Administrative Project



## Administrative Project

### Majnoon Integrated Field Management Services & Gate

- Location Basra, Iraq
- Client Etlatat AL hadharah LLC, Basra Oil Co.





Selected Project

Commercial Project



Commercial Project

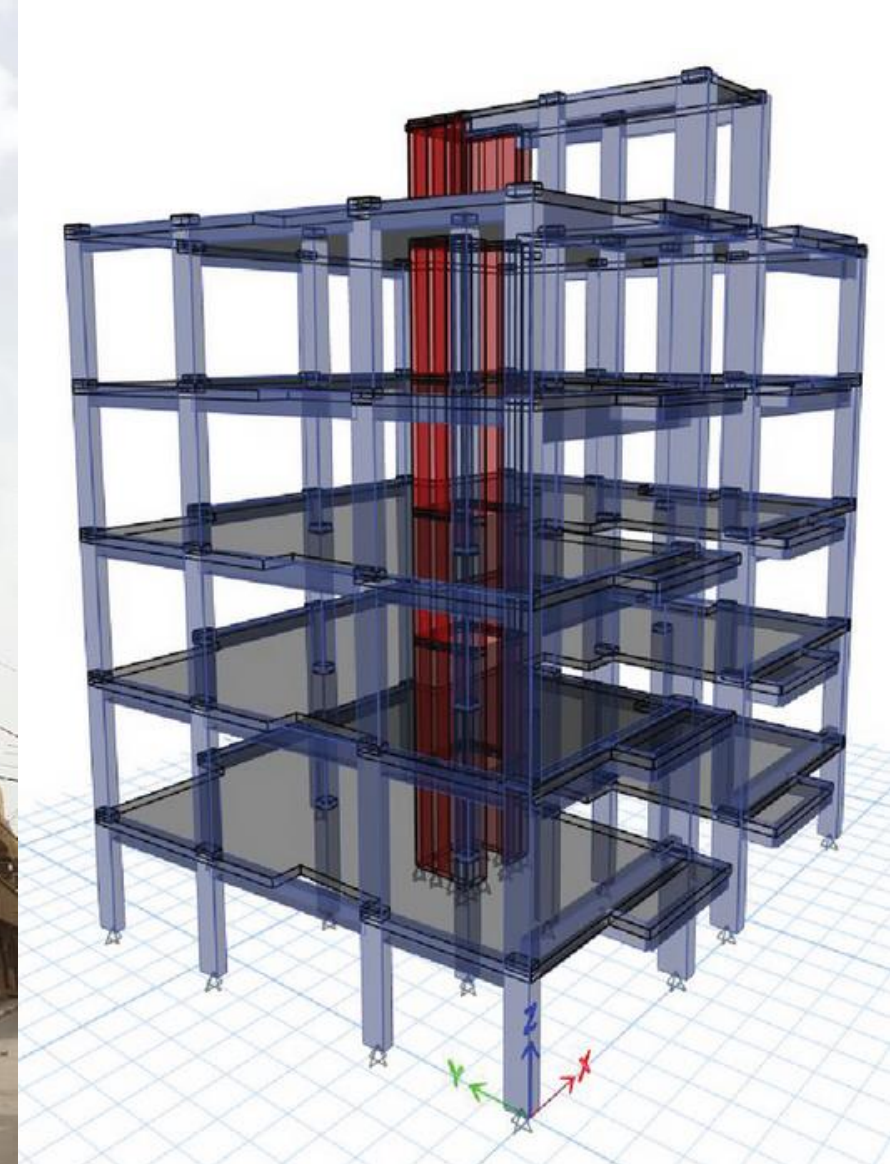
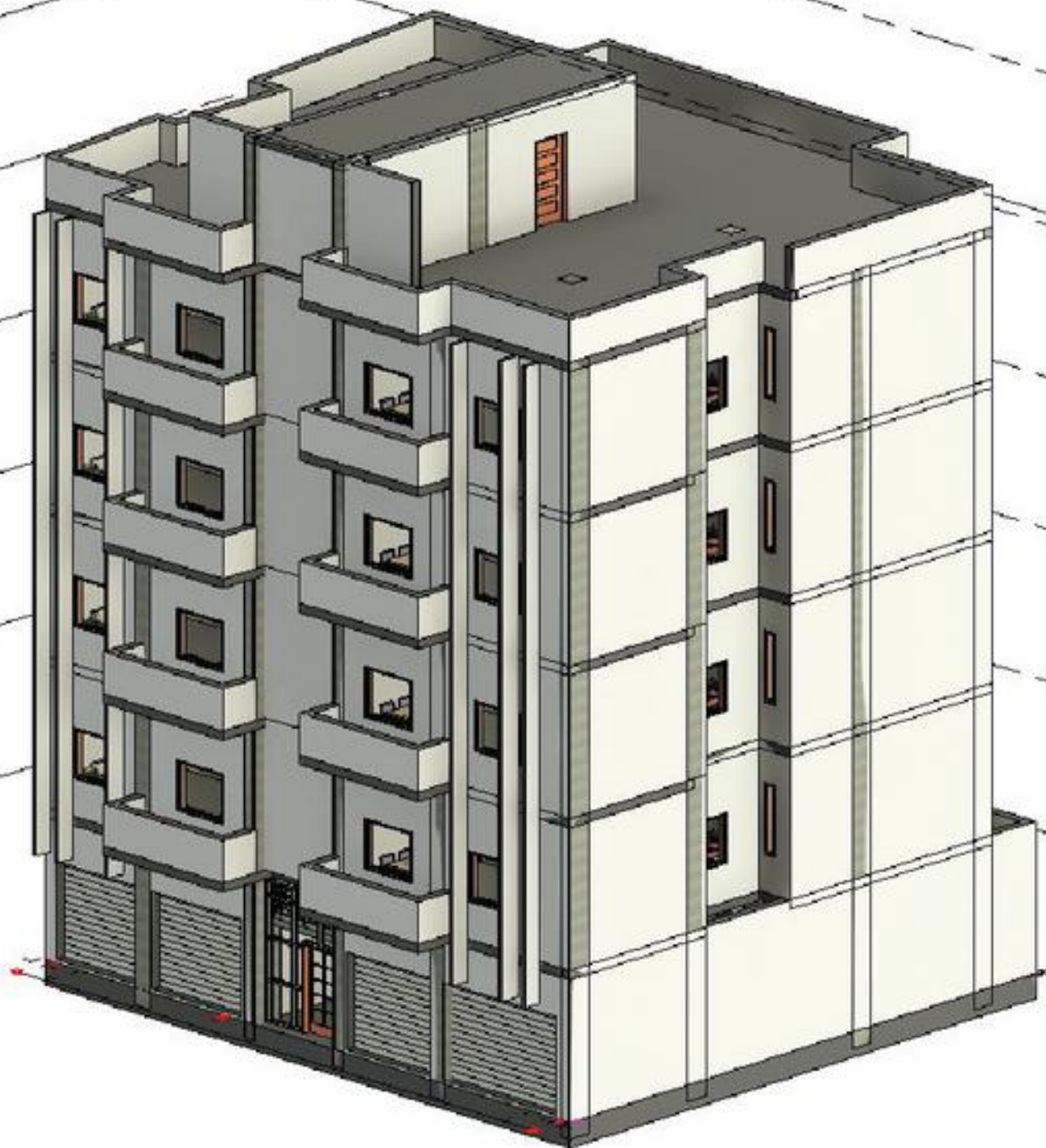
Gulf Gate Mall

- Location Safwan, Basra, Iraq
- Size 1700 sqm
- Client Atiaf AL-Mahaba



## Selected Project

### Residential Project



## Residential Project

### Abasiya Building

- Location Basra, Iraq
- Size 300 sqm
- Client Privet



## Selected Project

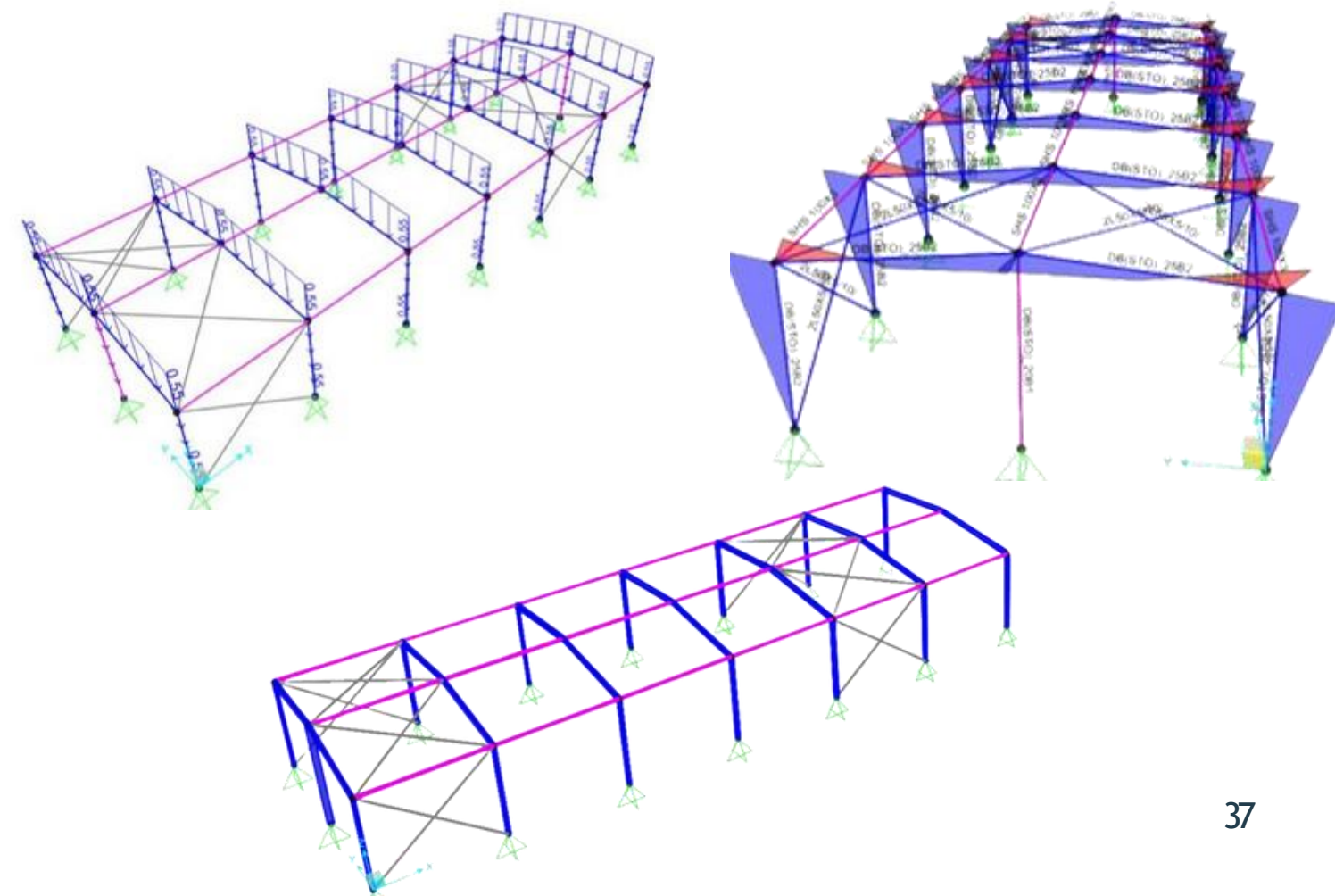
### Steel Structure Project



## Steel Structure Project

### Welding School

- Location Basra, Iraq
- Size 300 sqm
- Client ETMAM, HYUNDAI, JGC





## Selected Project

### Government Project



## Government Project

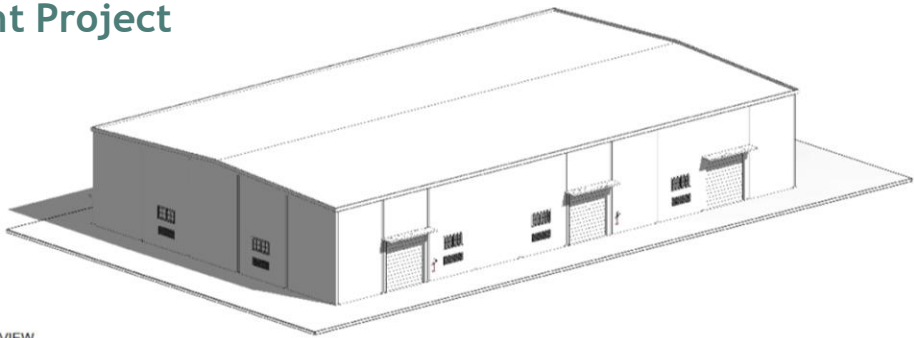
### Federal Board of Supreme Audit

- ♦ Location Basra, Iraq
- ♦ Size 3,000 sqm
- ♦ Client Basra Investment Commission

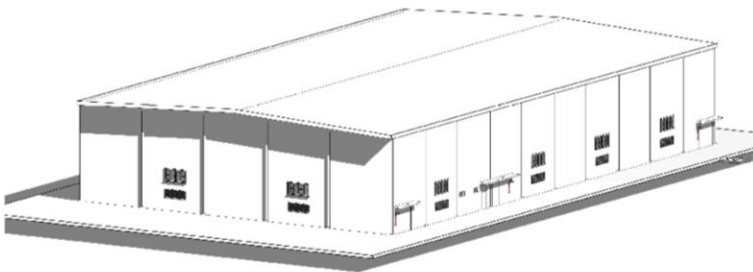




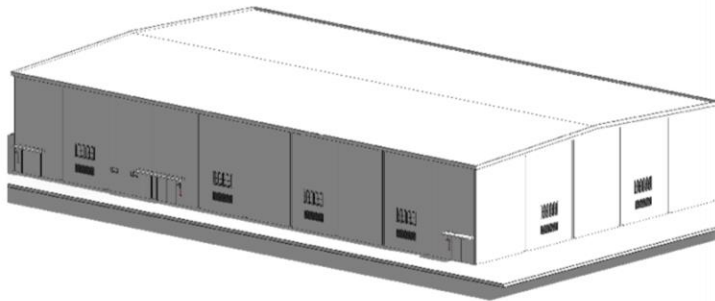
Selected Project  
Government Project



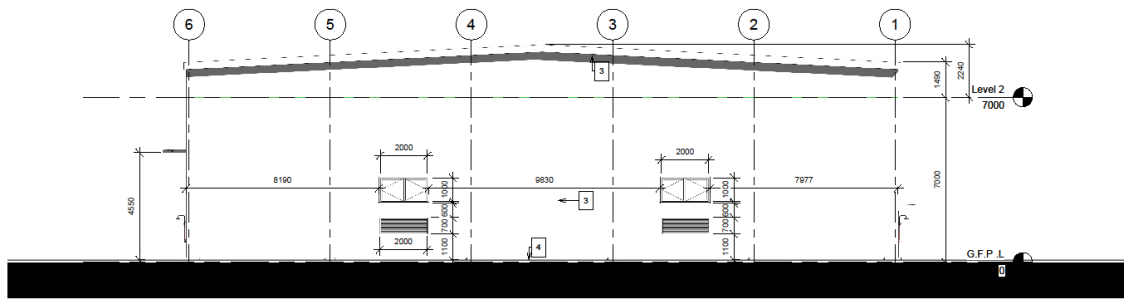
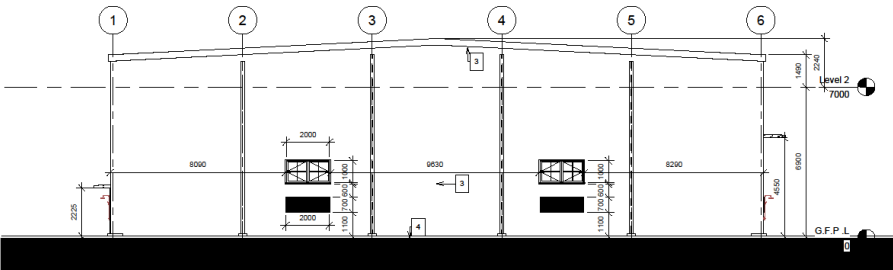
1 3D VIEW



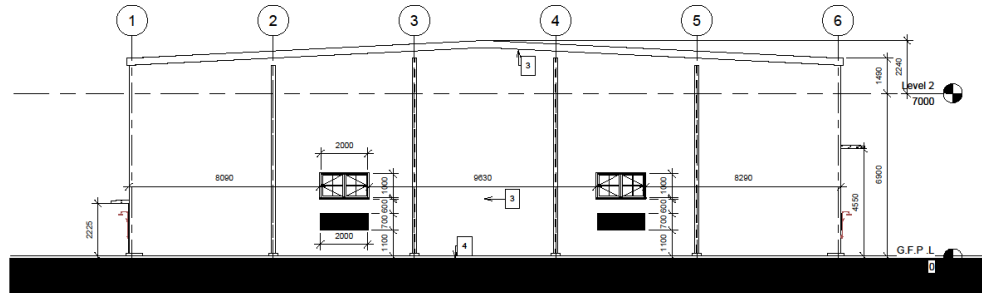
2 3D VIEW 2



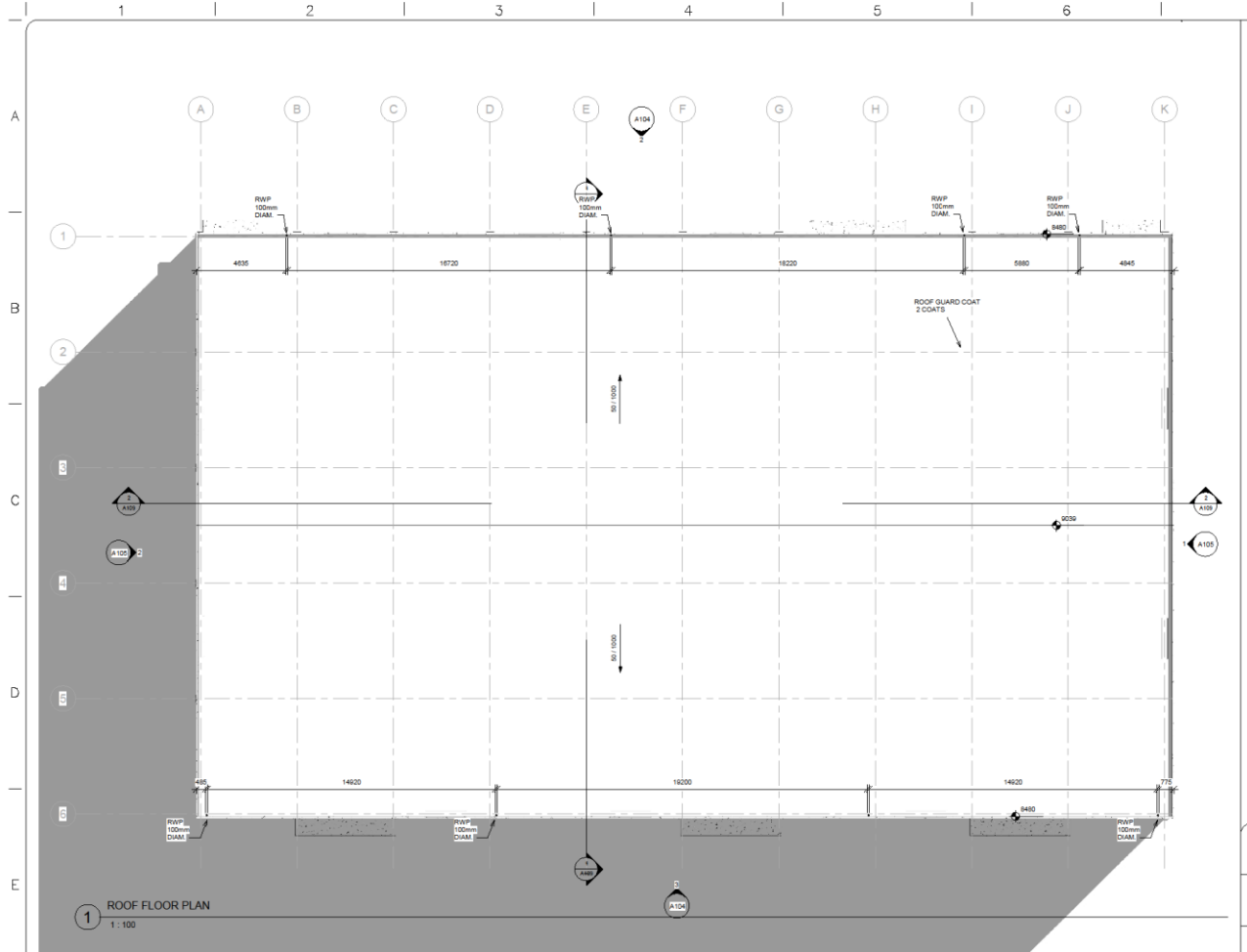
3 3D VIEW 3



1 East  
1:100



2 West  
1:100



Project

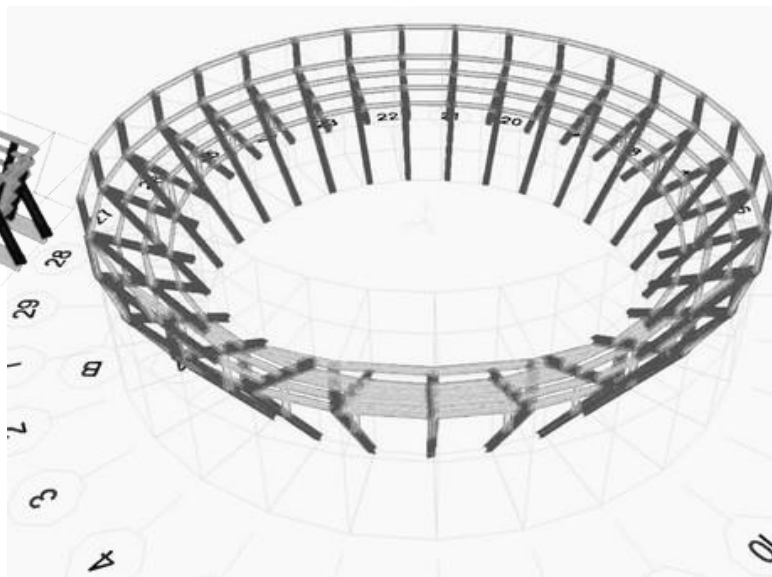
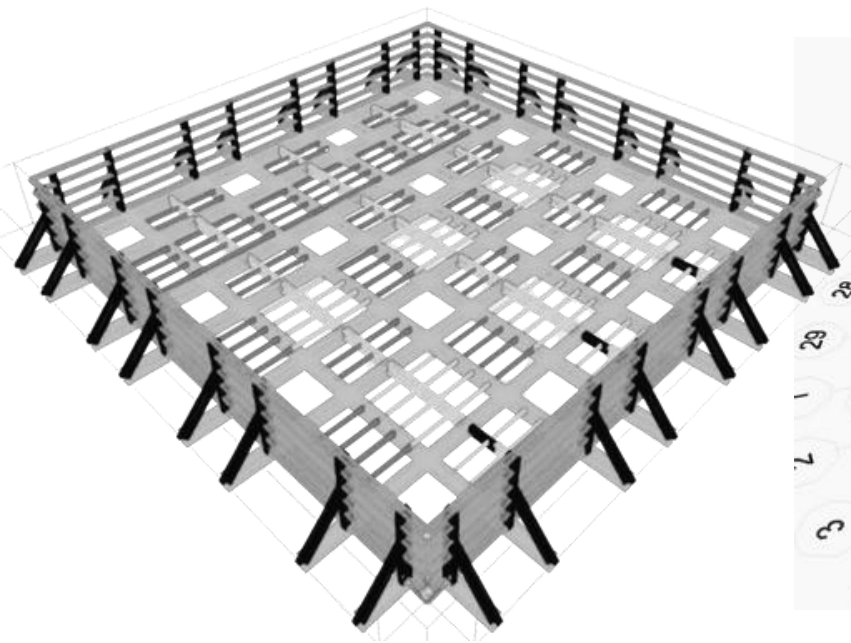
PROVISION OF CHEMICAL WAREHOUSE AND SEMI-OPEN  
MATERIALS RECEIVING SHADE

Location B9  
Size 1500 sqm  
Client KUWAIT ENERGY IRAQ LIMITED (KEIL)



## Selected Project

### Formwork Design



## Formwork Design

### New Zubair Bridge

- Location Basra, Iraq
- Client Ashour Compan



# Selected Project

## Supervision Project



### Supervision Project

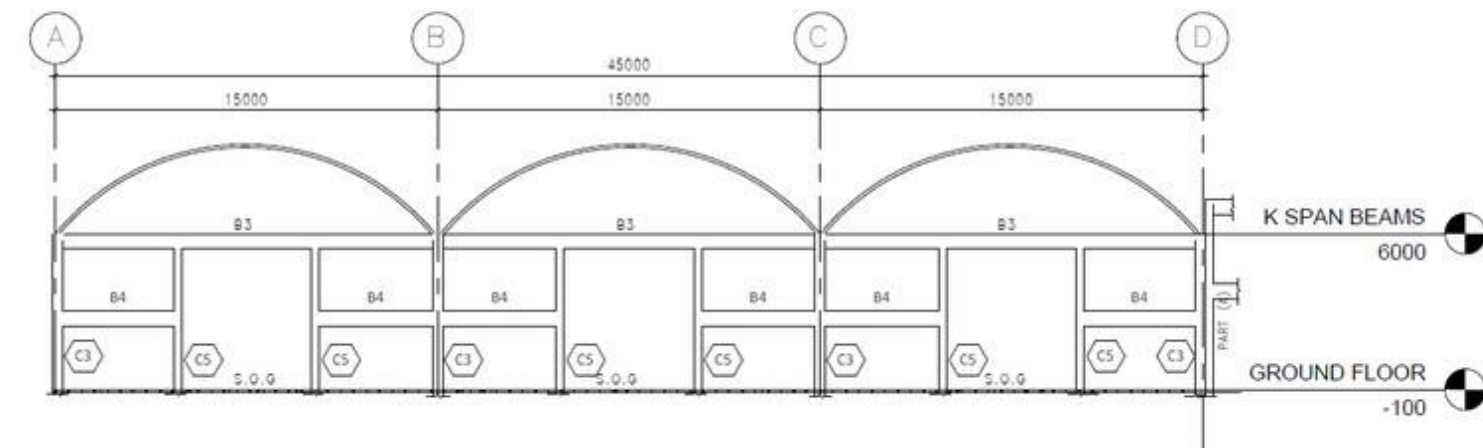
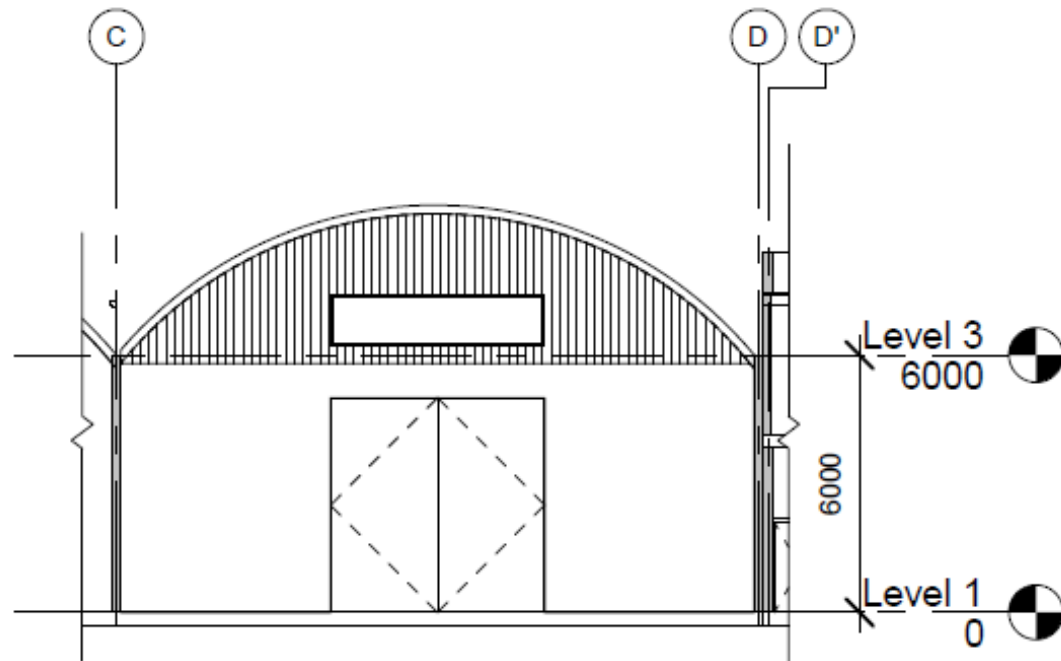
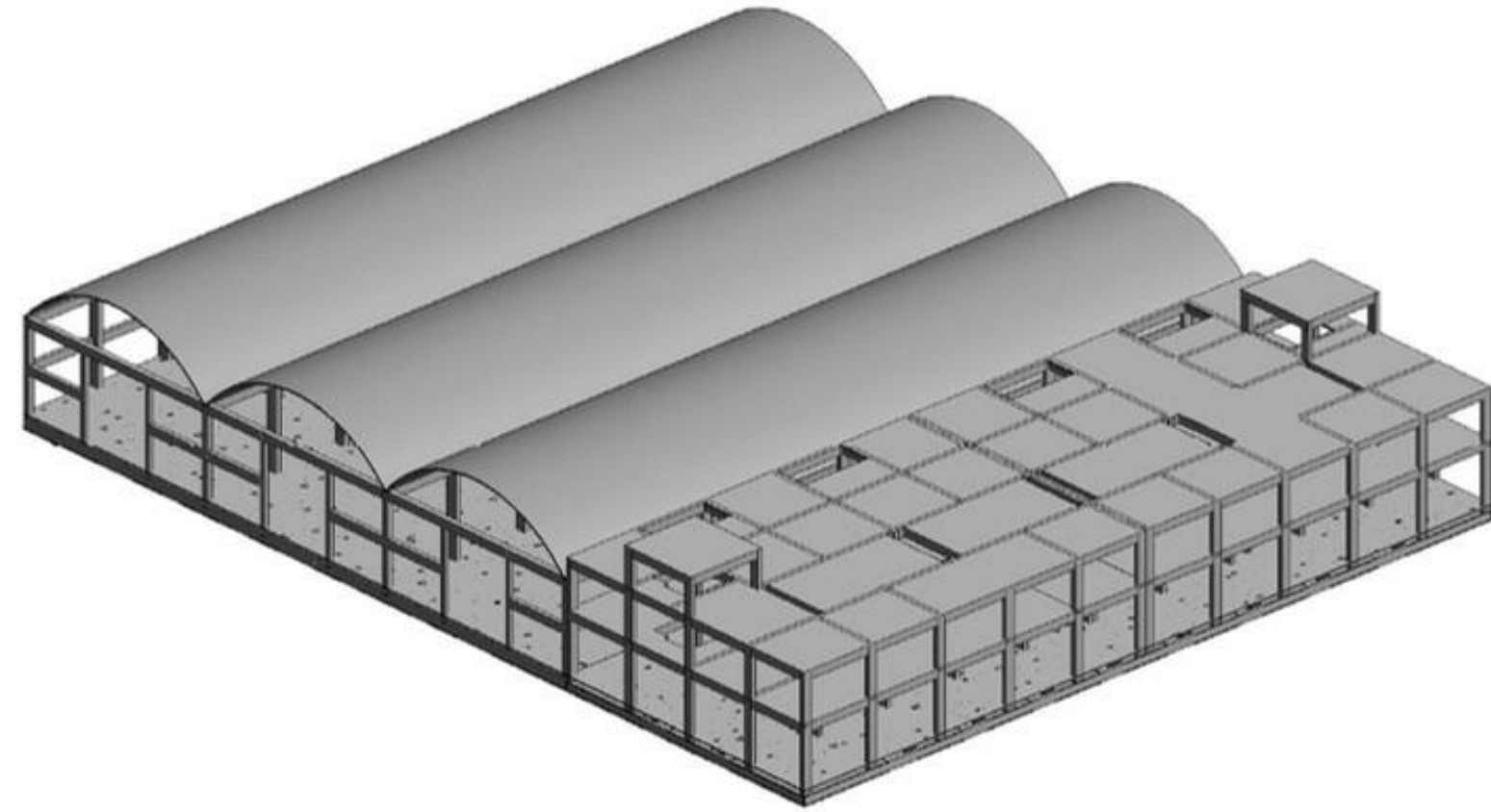
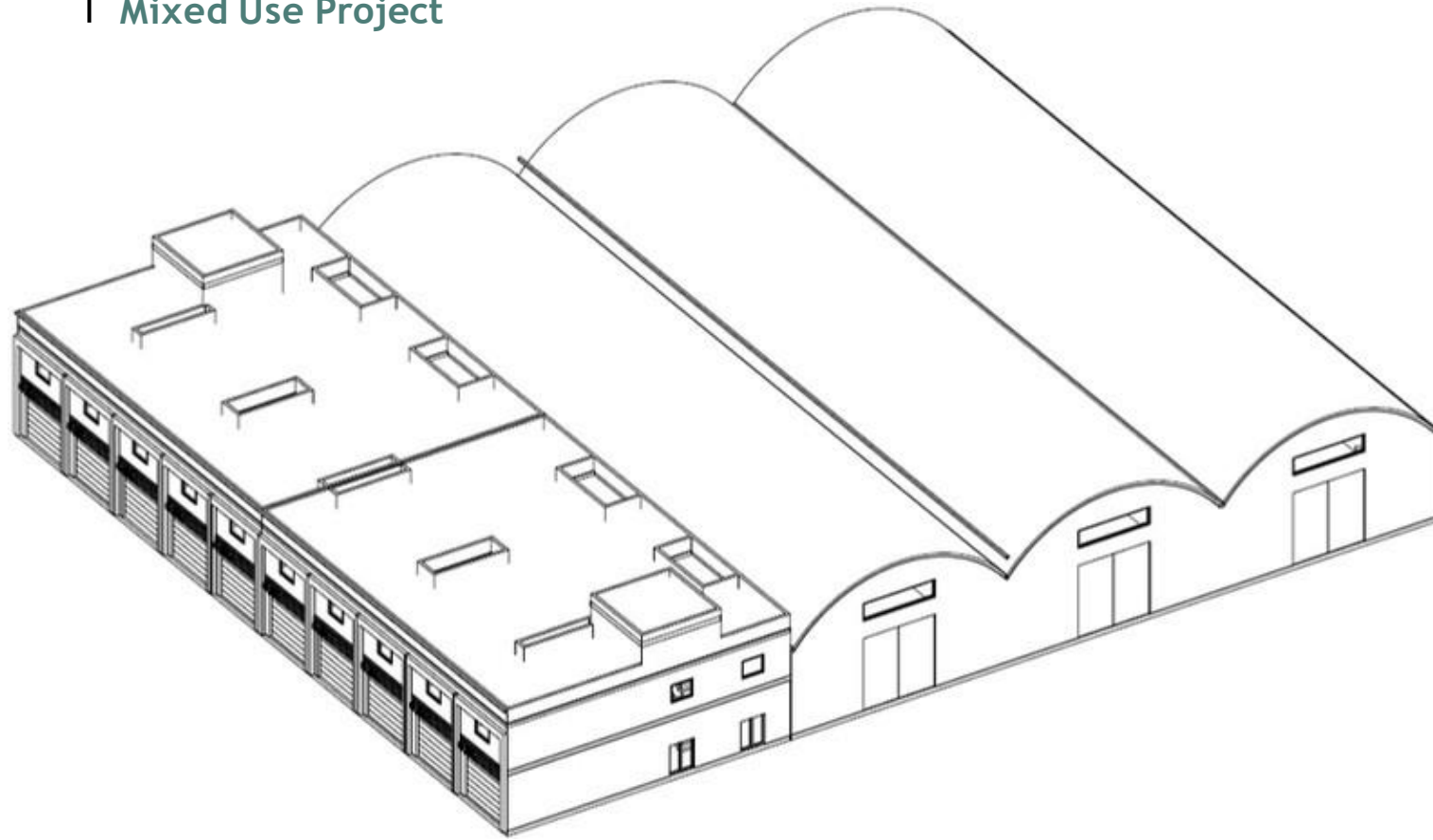
### Commercial Building

- Location Basra, Iraq
- Size 1200 sqm
- Client Privet



## Selected Project

### Mixed Use Project



## Mixed Use Project

### Basra Commercial-Industrial Building

- Location Basra, Iraq
- Size 3500 sqm
- Client Privet



## Selected Project

### Educational Building



## Educational Building

### AL-Raha School

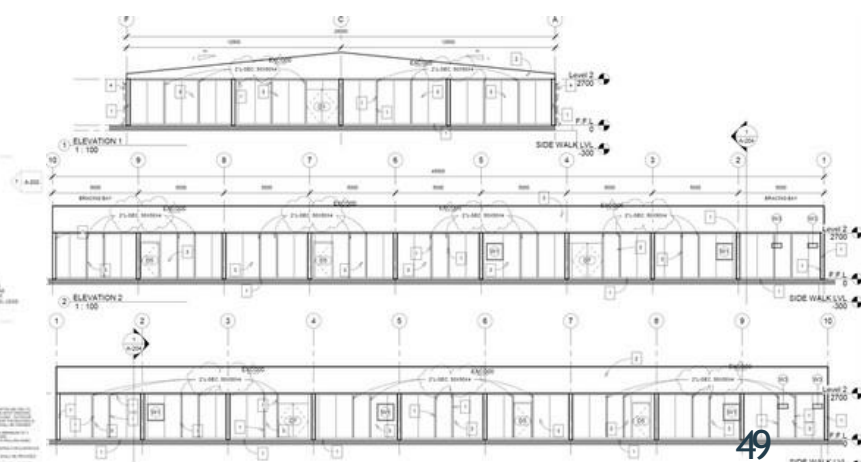
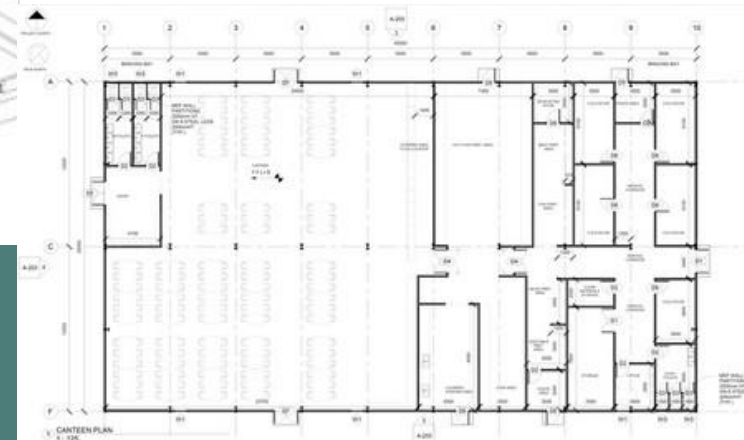
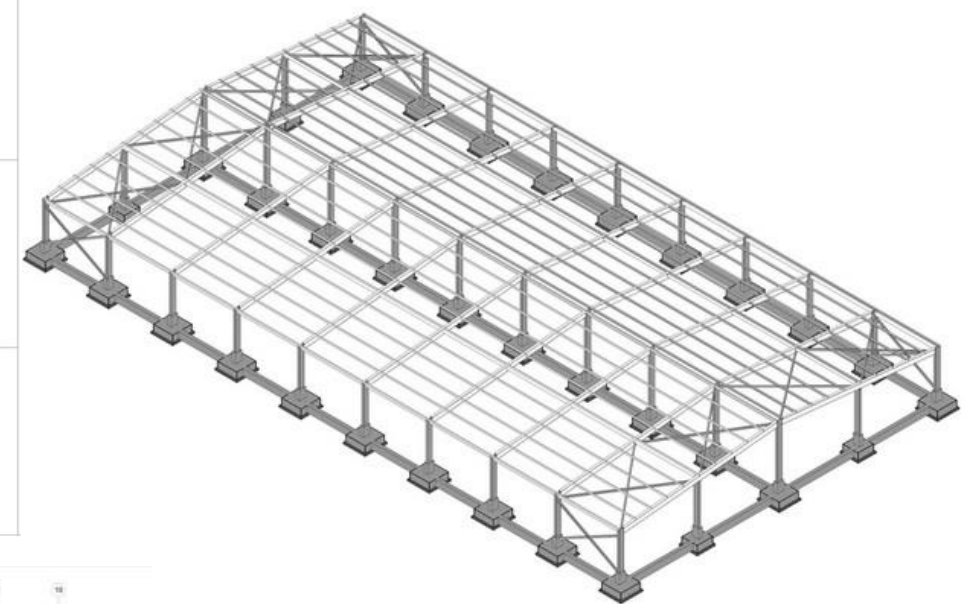
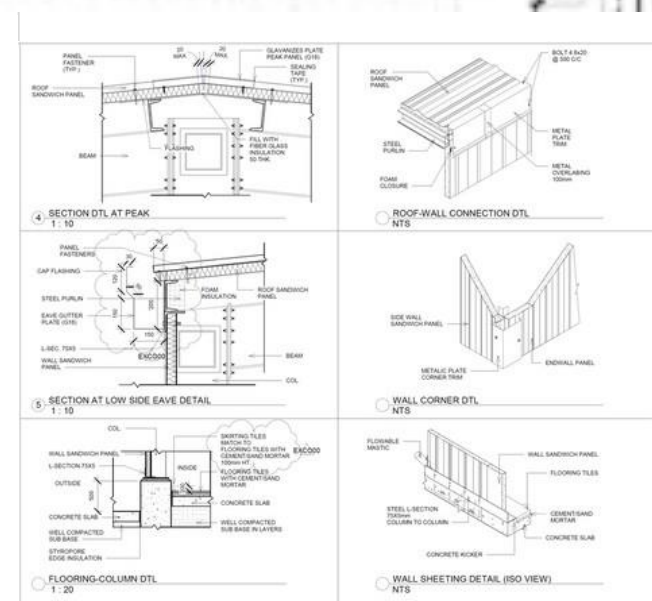
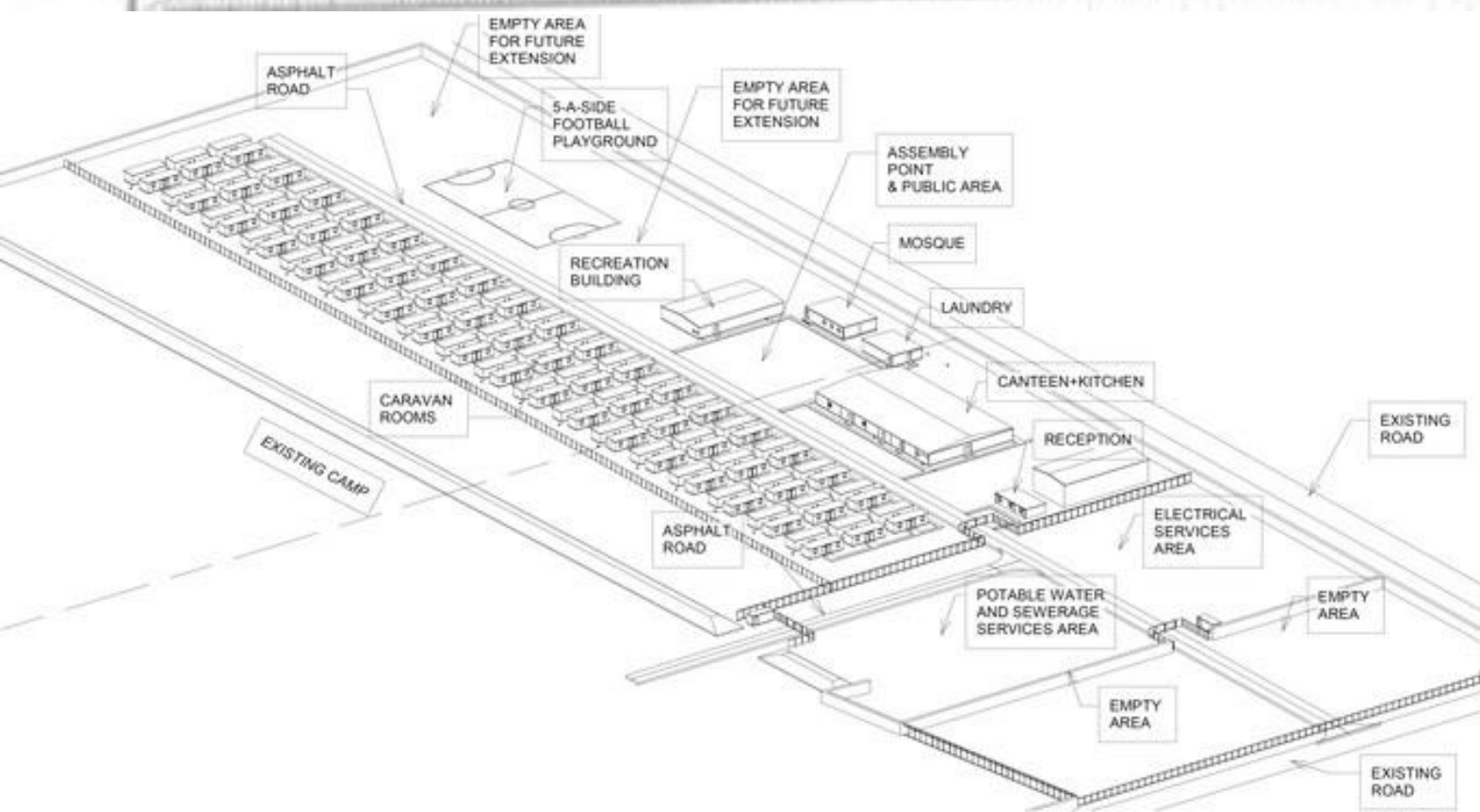
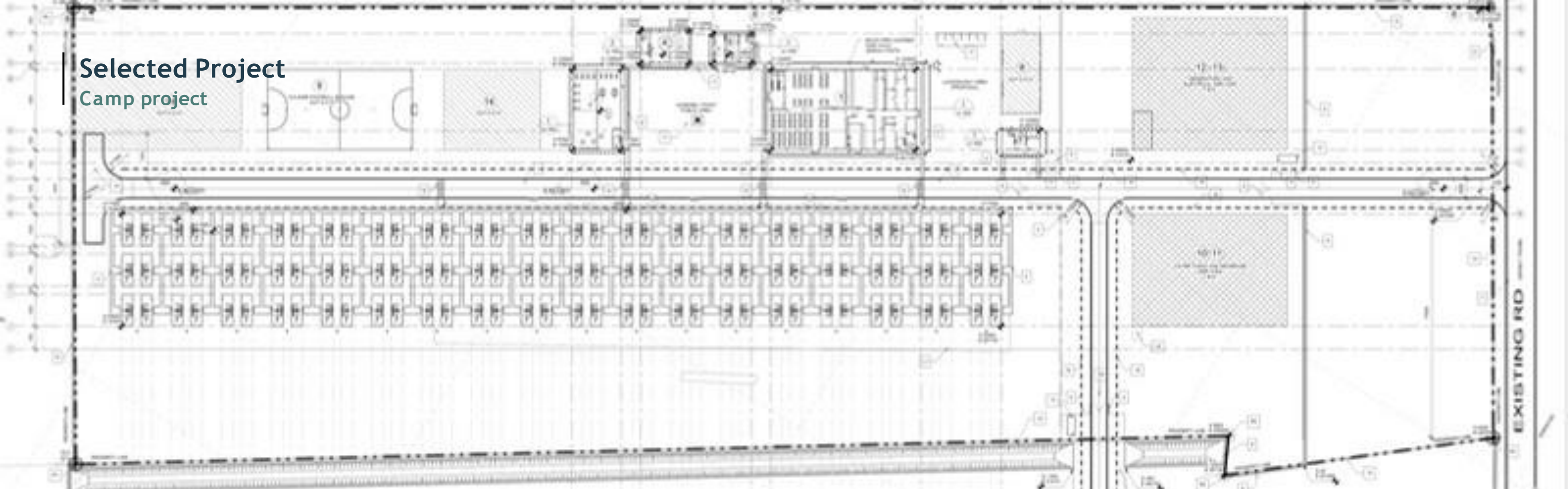
- ♦ Location Basra, Iraq
- ♦ Size 2000 sqm
- ♦ Client AL YAMAMA ENGINEERING SERVICE





## Selected Project

### Camp project



## Camp Project

### New Accommodation Camp For Contractor's Personnel

- Location Basra, Iraq
- Size 70,000 sqm
- Client L.A.C ,Eni,ZFOD



## Selected Project

### Urban Design



## Urban Design

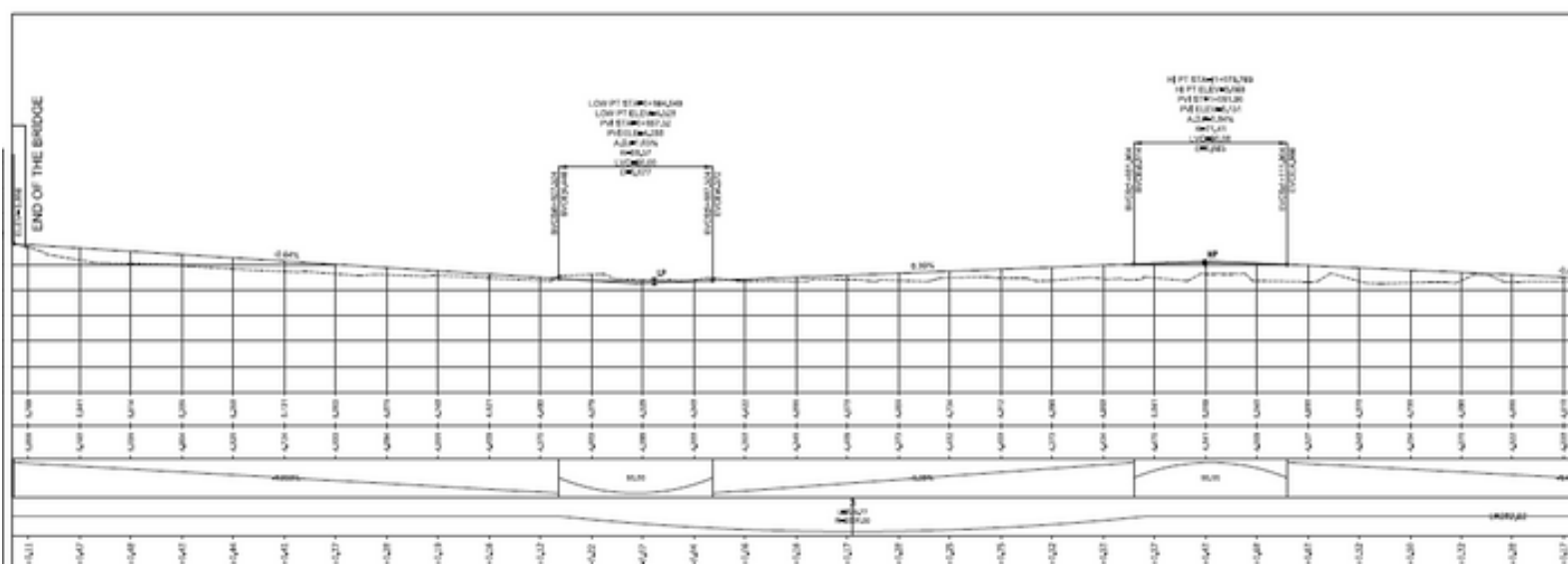
### Abu Al-Kaseeb Urban Design

- Location Basra, Iraq
- Size 350,000 sqm
- Client Basra Government





## Selected Project Infrastructure



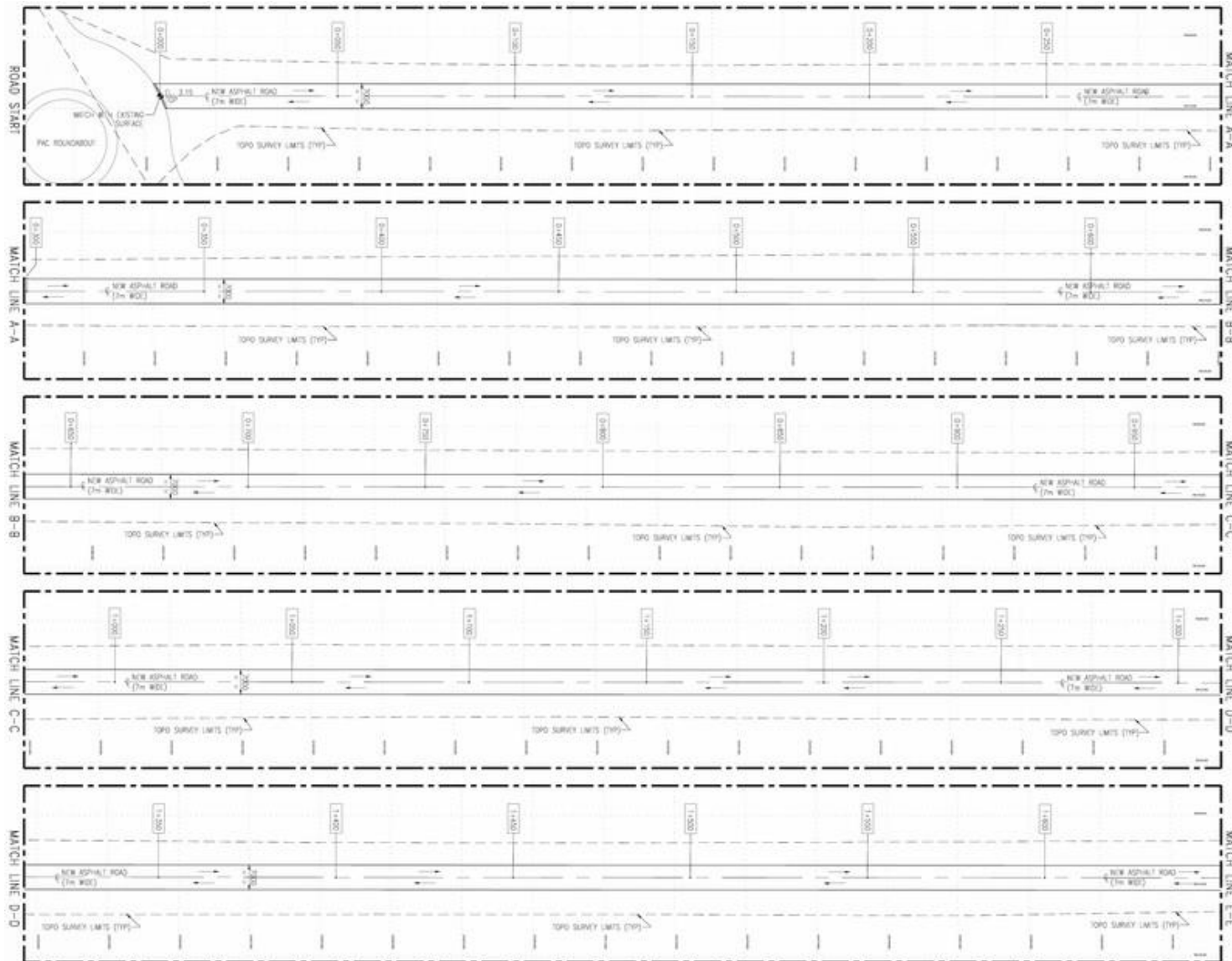
Infrastructure

Baghdad Road

- Location Basra, Iraq
- Client ALASAB CO.



## Selected Project Infrastructure

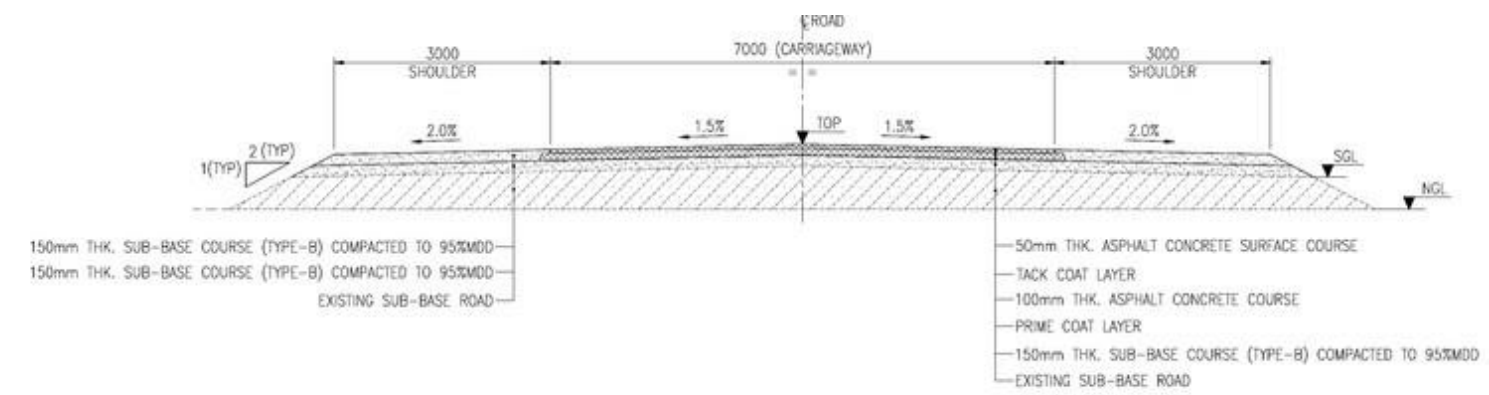


## Infrastructure

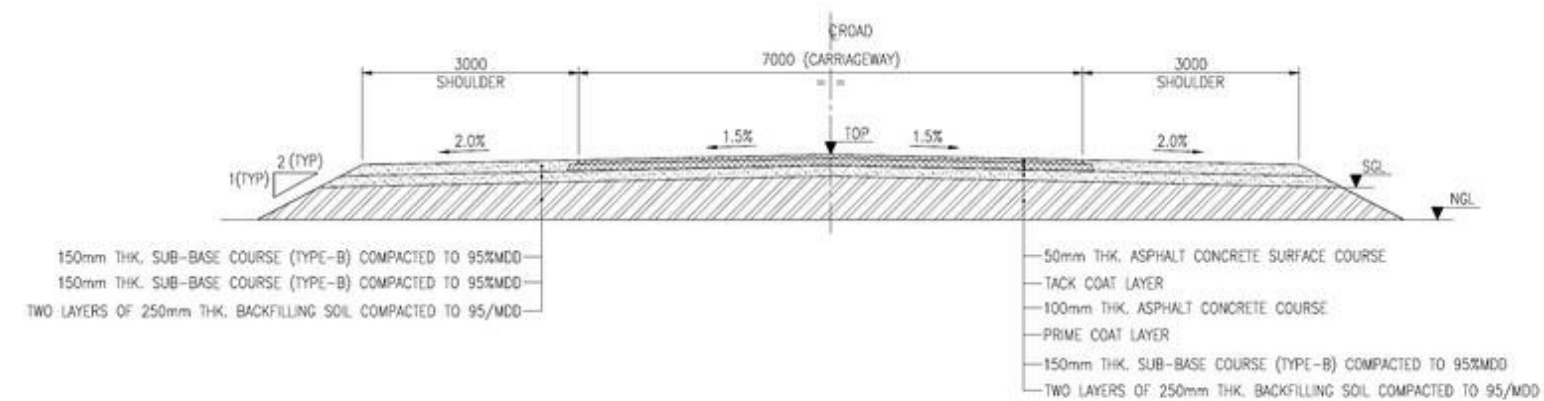
### B9 Oilfield Road Upgrading Phase 2 Project

- Location
- Client

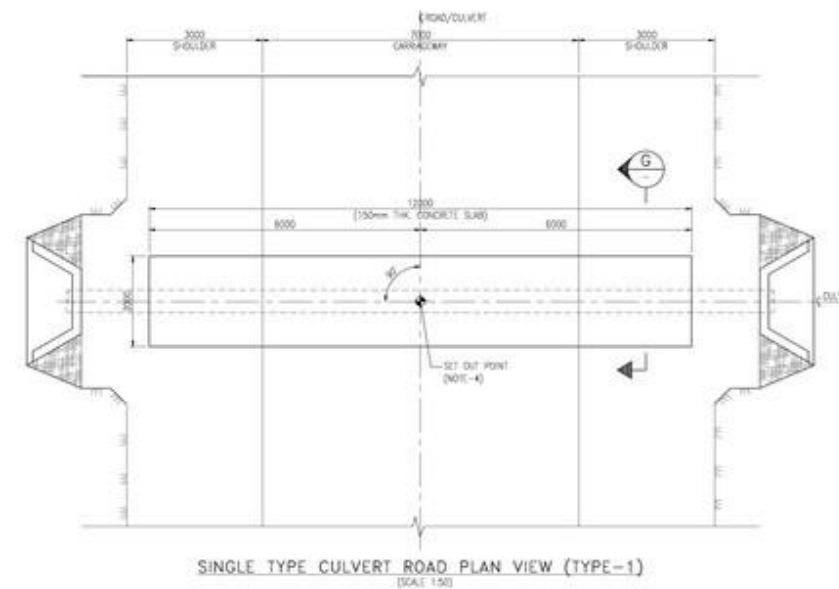
Basra, Iraq  
AL DHAM IN CO., KEIL



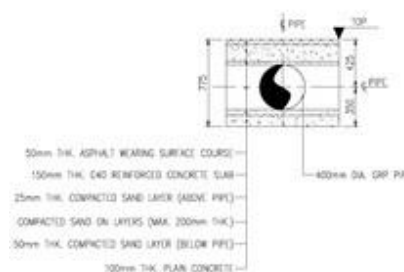
TYPICAL SECTION FOR ASPHALT ROAD (TYPE-C)  
(SCALE 1:50)



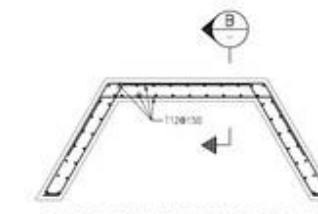
TYPICAL SECTION FOR ASPHALT ROAD (TYPE-D)  
(SCALE 1:50)



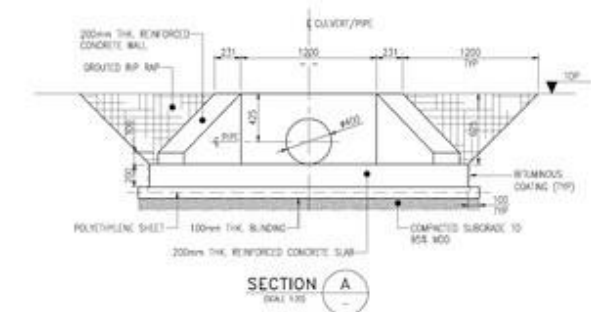
SINGLE TYPE CULVERT ROAD PLAN VIEW (TYPE-1)  
(SCALE 1:50)



TYPICAL SECTION FOR CULVERT PIPE  
BACKFILLING



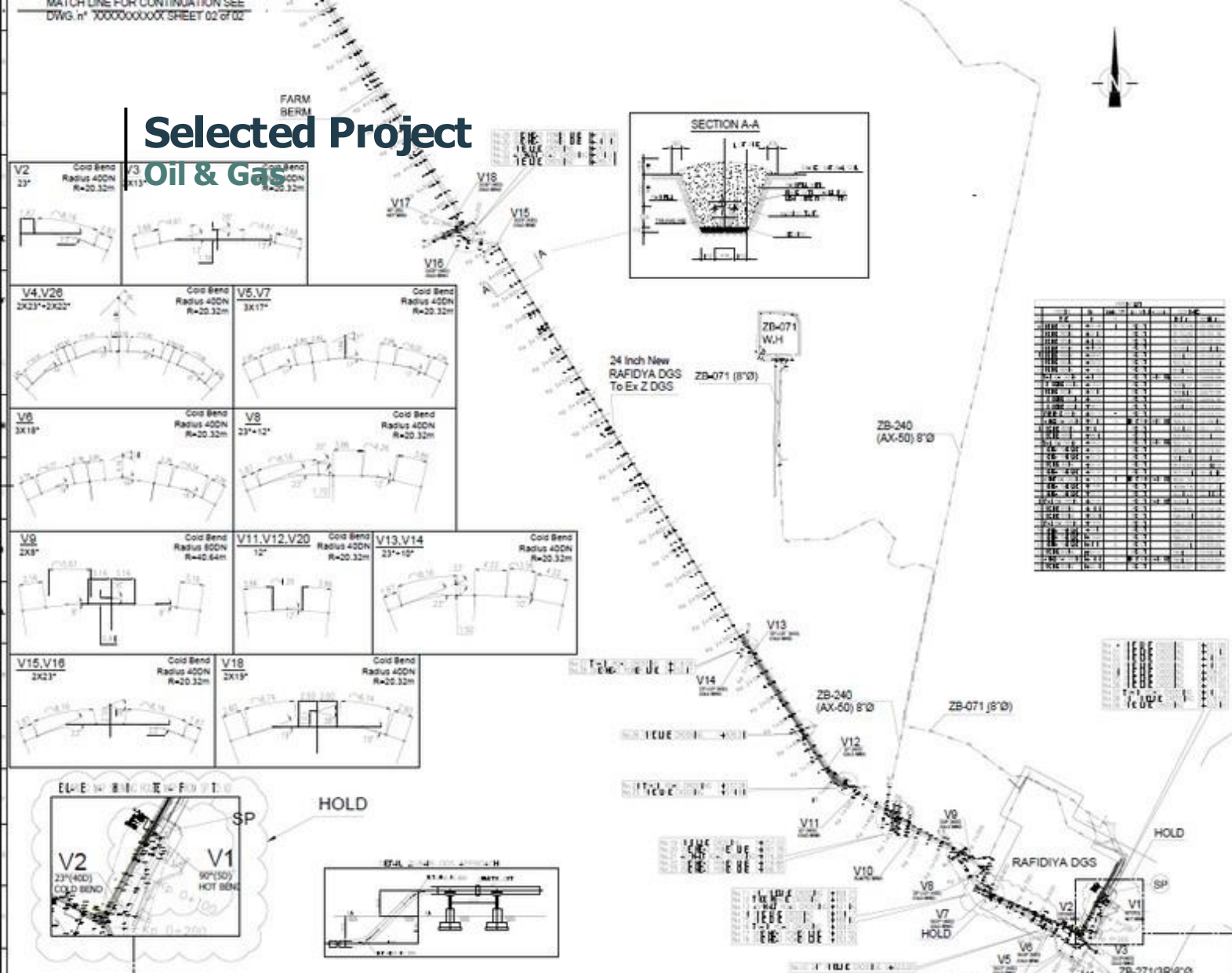
SINGLE CULVERT CONCRETE WING  
REINFORCEMENT DETAILS  
(SCALE 1:20)



TYPICAL DETAILS OF SINGLE TYPE  
CULVERT CONCRETE WING  
(SCALE 1:20)



## Selected Project



## Oil & Gas

## Pipe Line Project 20" Rafidiya DGS to Zubair DGS (PHASE 1)

- ◆ Location Basra, Iraq
- ◆ Client TAAM





## Selected Project

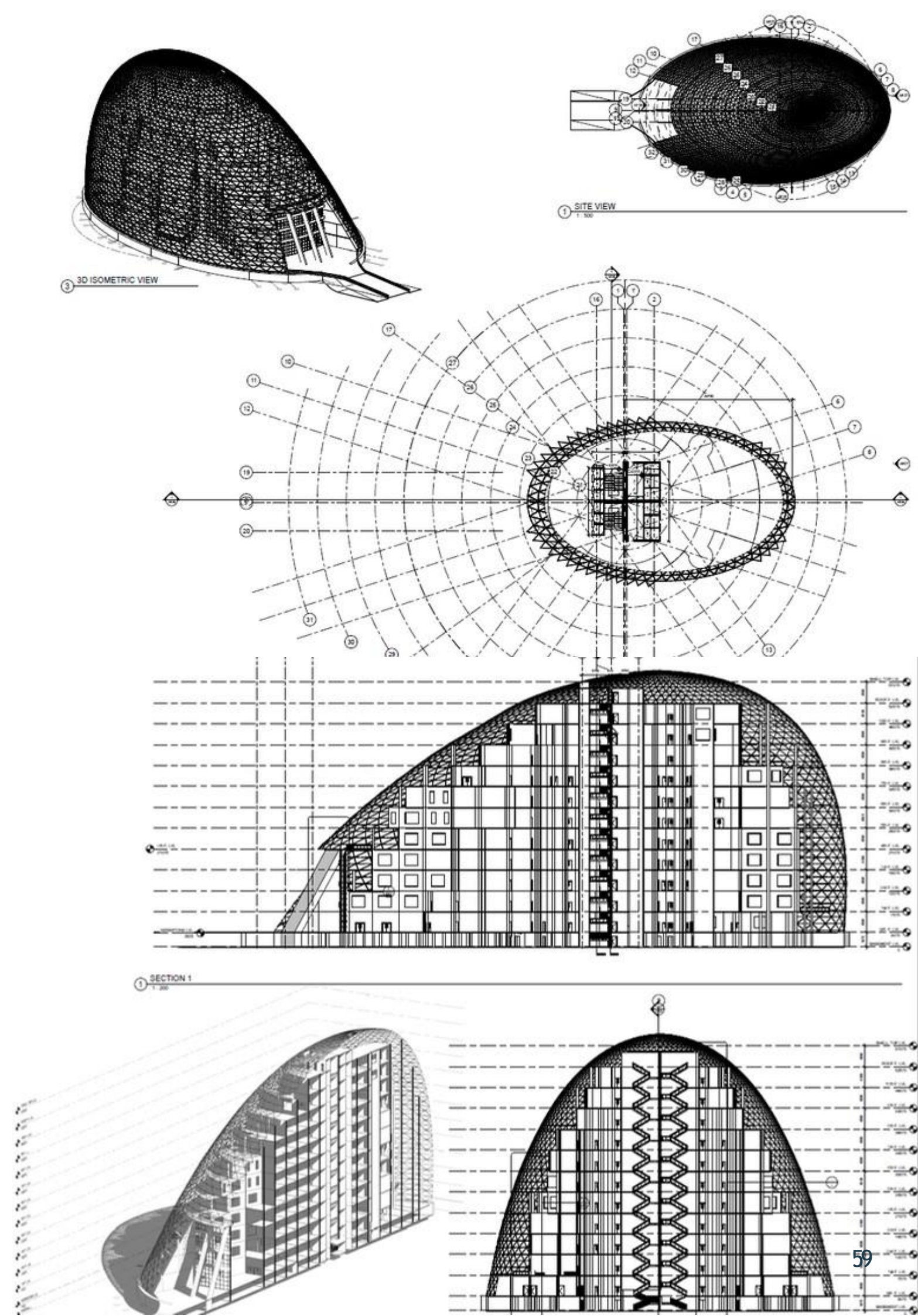
### Medical Project



## Medical Project

### Medical Consultancy Center

- Location Basra, Iraq
- Client AL HADATHA CO. FOR ENGINEERING & CONSULTATION



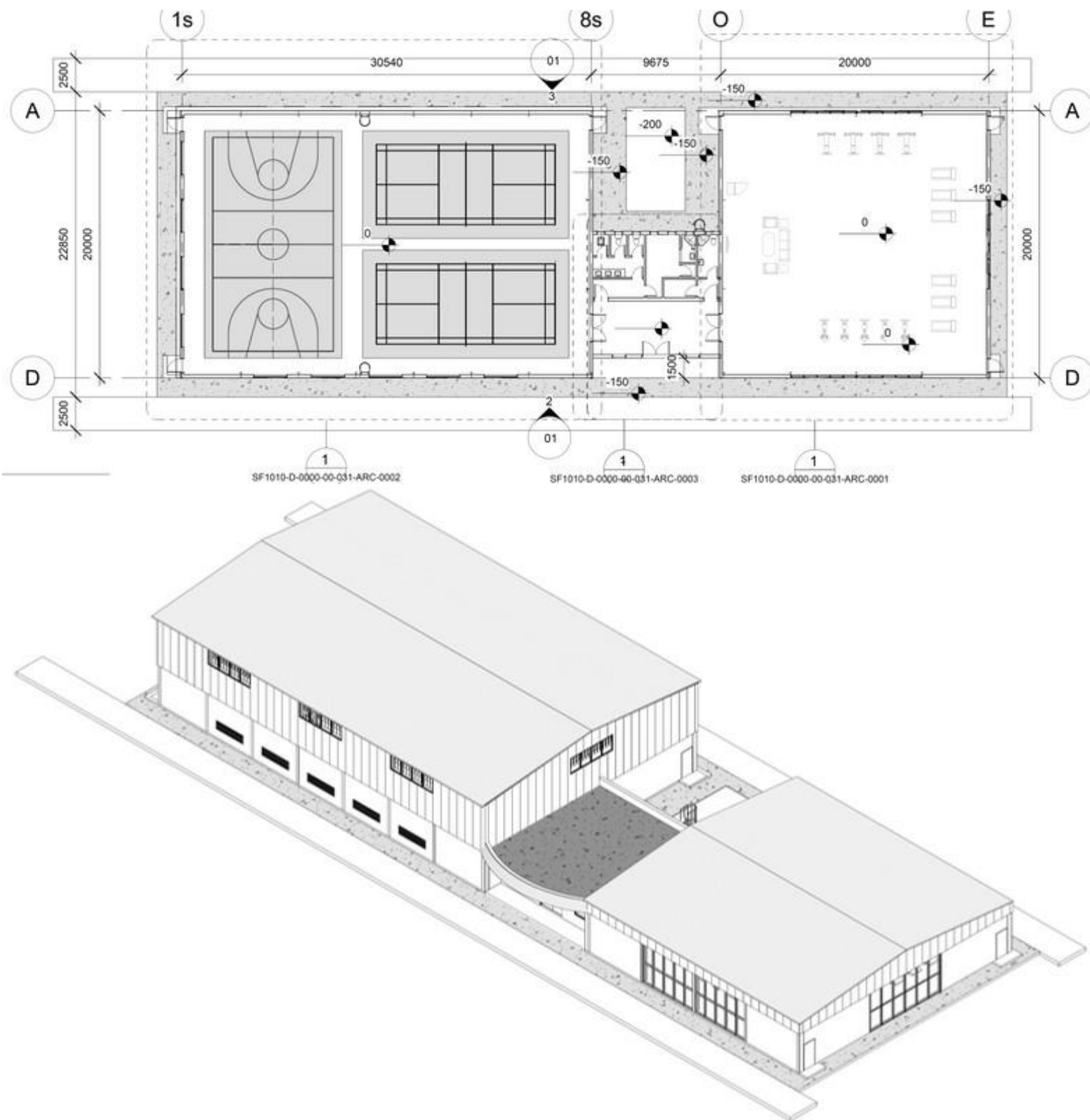






# Selected Project

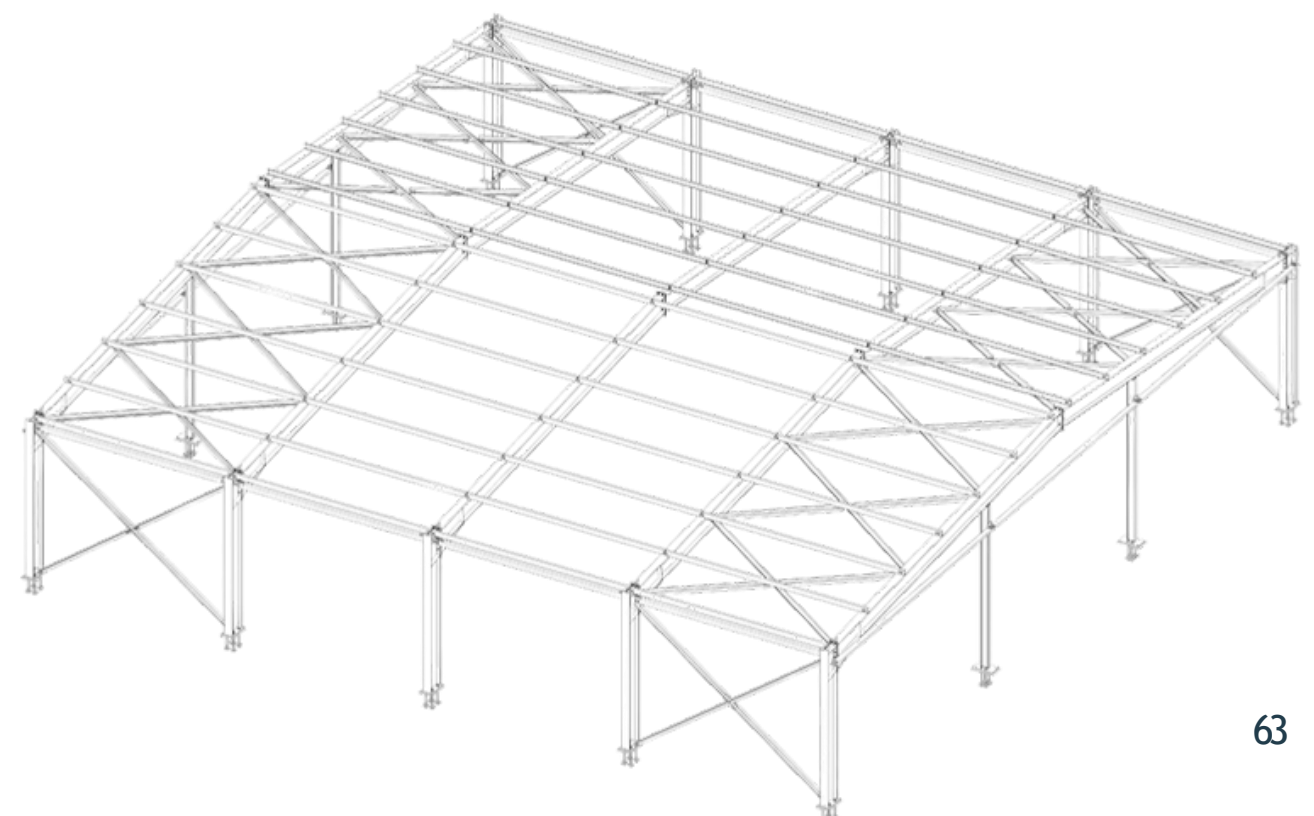
## Sport Project



### Sport Project

### Gym Building and Facilities

- Location Basra, Iraq
- Size 1200 sqm
- Client AL QUBBA ENGINEERING, KEIL





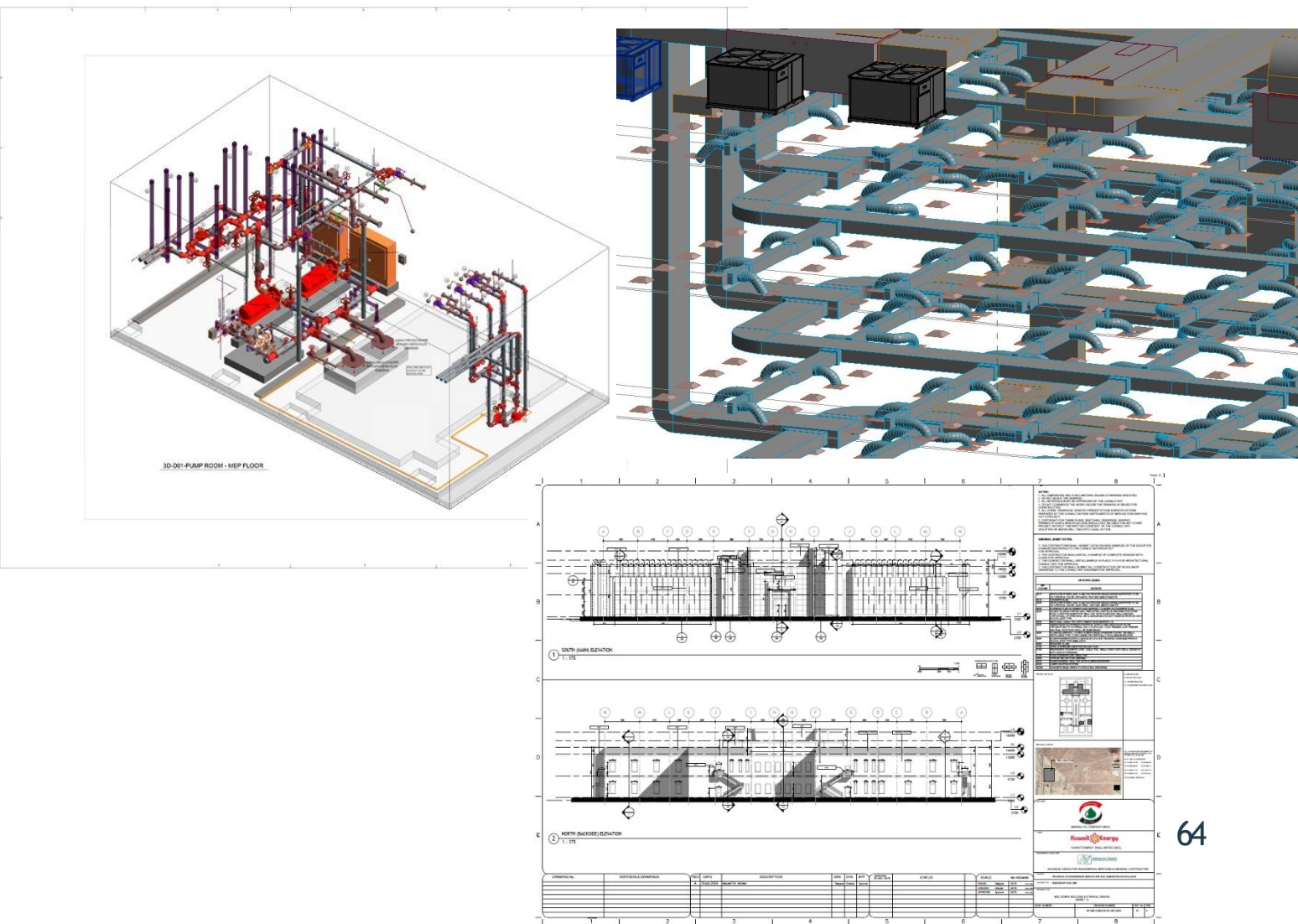
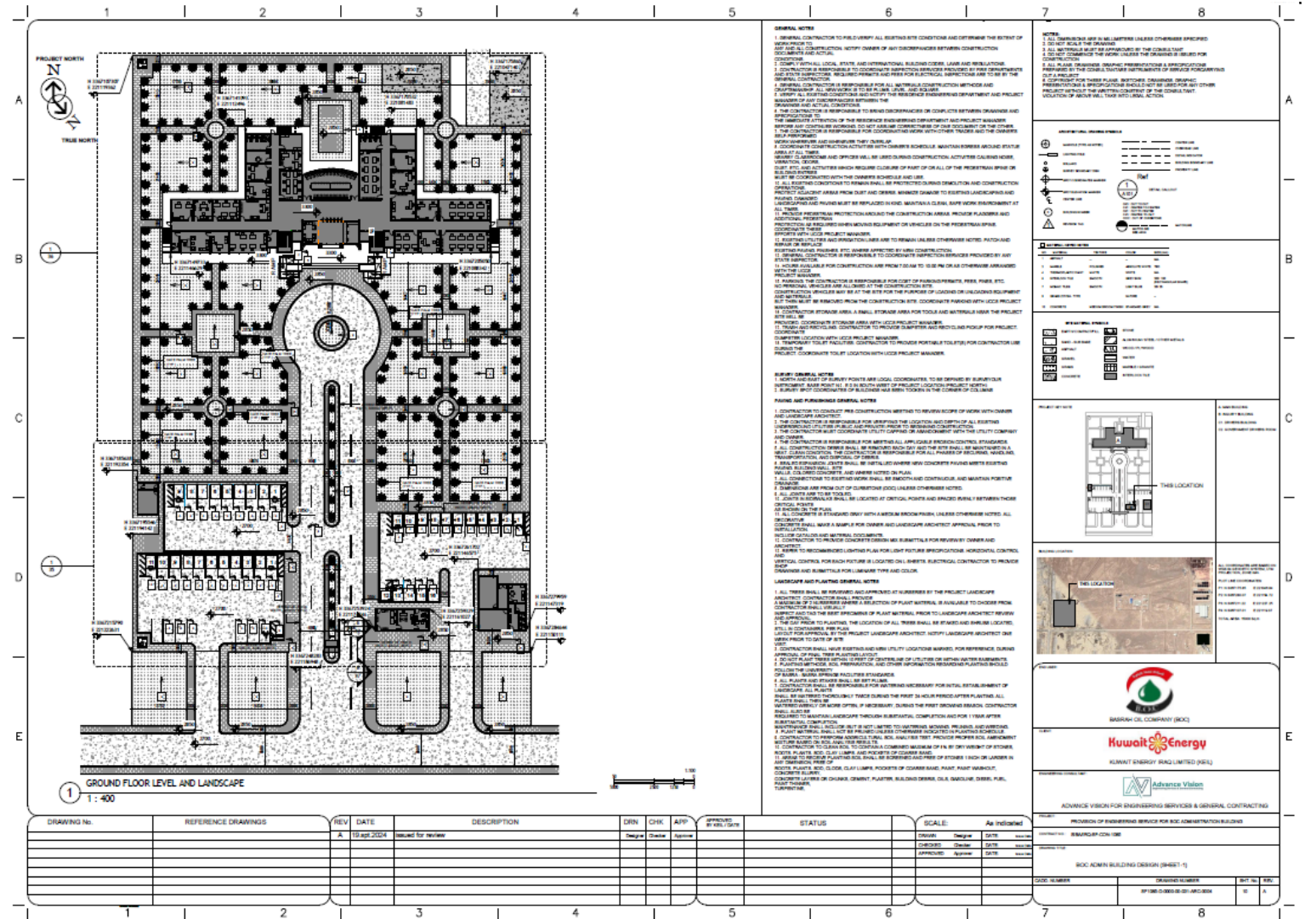
# Selected Project

## Administrative building project



## 62

Location	Basra, Iraq
Size	1500 sqm
Client	AL QUBBA ENGINEERING, KEIL





Selected Project  
Administrative building project



Sport Project

ARCHITECTURAL DRAWINGS OF BOC  
ADMINISTRATION BUILDING - SIBA FIELD

Location	Basra, Iraq
Size	1500 sqm
Client	AL QUBBA ENGINEERING, KEIL



